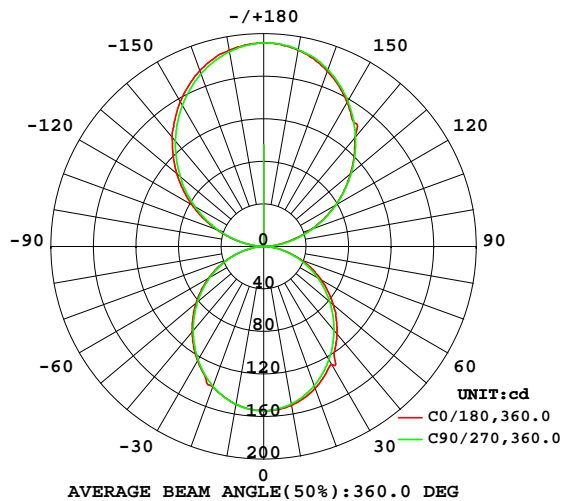


LUMINAIRE PHOTOMETRIC TEST REPORT

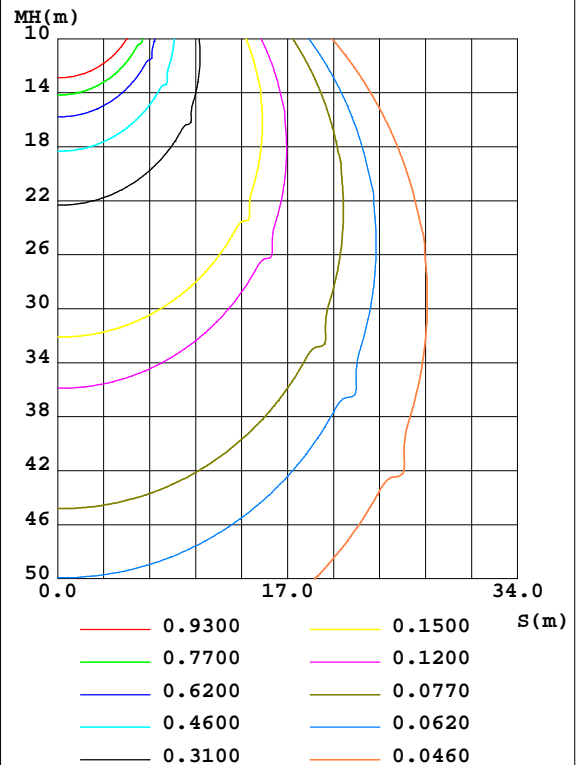
NAME: CapitalT_325_BLK_HE@350mA_4K_OpalV	TYPE:	WEIGHT:
SPEC.:	DIM.:	SERIAL No.:
MFR.: Darkon	SUR.:	Shielding Angle:

DATA OF LAMP		PHOTOMETRIC DATA Eff: 55.76 lm/W			
MODEL		Imax(cd)	191.5	S/MH(C0/180)	1.20
NOMINAL POWER(W)		LOR(%)	100.0	S/MH(C90/270)	1.19
RATED VOLTAGE(V)	220.0	TOTAL FLUX(lm)	923.75	η UP,DN(C0-180)	28.3,22.0
NOMINAL FLUX(lm)	461.875	CIE CLASS	DIFFUSE	η UP,DN(C180-360)	27.6,22.0
LAMPS INSIDE	2	η up(%)	56.0	CIBSE SHR NOM	1.25
TEST VOLTAGE(V)	220.0	η down(%)	44.0	CIBSE SHR MAX	1.35

LUMINOUS INTENSITY DISTRIBUTION DIAGRAM



C0 PLANE ISOLUX DIAGRAM (UNIT:lx)



C Range: 0 - 360DEG
C Interval: 5.0DEG
Test Speed: MEDIUM
Temperature:25.3DEG
Operators:Ky
Test Date:

γ Range: 0 - 180DEG
 γ Interval: 0.5DEG
Test System:EVERFINE GO-2000_V1 SYSTEM V2.0.295
Humidity:65.0%
Test Distance:7.220m [K=1.3850]
Remarks:

ZONAL FLUX DIAGRAM

ZONAL FLUX DIAGRAM:

γ	C0	C45	C90	C135	C180	C225	C270	C315	γ	Φ zone	Φ total	%lum,lamp
5	154.0	153.7	153.3	153.4	153.5	153.7	153.7	153.8	0- 5	3.683	3.683	0.40,0.40
10	151.7	151.1	150.4	150.4	150.7	150.8	150.8	151.3	5- 10	10.89	14.58	1.58,1.58
15	147.6	146.6	145.6	145.9	146.2	146.2	146.2	146.9	10- 15	17.63	32.21	3.49,3.49
20	141.9	140.6	139.4	139.7	140.2	140.1	139.8	141.0	15- 20	23.63	55.84	6.05,6.05
25	134.8	133.3	131.6	132.2	132.8	132.6	132.2	133.6	20- 25	28.71	84.55	9.15,9.15
30	128.2	124.7	122.9	125.4	124.3	127.6	123.3	125.1	25- 30	32.57	117.1	12.7,12.7
35	117.4	115.3	113.2	114.1	114.9	114.5	113.7	115.5	30- 35	35.37	152.5	16.5,16.5
40	107.3	107.0	102.9	103.9	104.8	104.2	103.2	110.0	35- 40	36.62	189.1	20.5,20.5
45	96.64	94.45	92.23	93.28	94.10	93.38	92.46	94.58	40- 45	36.81	225.9	24.5,24.5
50	85.46	83.34	81.18	82.23	83.03	82.31	81.30	83.44	45- 50	35.70	261.6	28.3,28.3
55	73.98	72.00	69.99	70.93	71.66	70.85	69.96	71.94	50- 55	33.51	295.1	31.9,31.9
60	62.22	60.41	58.63	59.44	60.03	59.31	58.52	60.32	55- 60	30.32	325.5	35.2,35.2
65	50.18	48.69	47.27	47.82	48.14	47.66	47.09	48.49	60- 65	26.24	351.7	38.1,38.1
70	38.07	37.02	36.01	36.34	36.30	36.09	35.82	36.80	65- 70	21.43	373.1	40.4,40.4
75	26.16	25.68	25.20	25.14	24.70	24.90	24.91	25.45	70- 75	16.13	389.3	42.1,42.1
80	15.08	15.18	15.07	14.80	13.92	14.51	14.80	14.86	75- 80	10.66	399.9	43.3,43.3
85	5.789	6.049	6.142	5.827	5.020	5.580	5.860	5.782	80- 85	5.491	405.4	43.9,43.9
90	0.4352	0.5471	0.6901	0.5315	0.3419	0.3046	0.2393	0.3357	85- 90	1.353	406.8	44.44
95	7.216	8.181	9.149	8.448	6.754	7.117	6.952	6.775	90- 95	1.795	408.6	44.2,44.2
100	18.89	20.11	21.22	20.50	18.42	18.68	18.41	18.23	95-100	7.189	415.7	45.45
105	32.89	33.81	34.78	34.26	32.41	32.13	31.48	31.56	100-105	13.90	429.6	46.5,46.5
110	47.92	48.50	49.15	48.92	47.33	46.52	45.53	46.00	105-110	20.97	450.6	48.8,48.8
115	63.10	63.50	63.83	63.99	62.54	61.28	59.95	60.77	110-115	27.79	478.4	51.8,51.8
120	78.15	78.48	78.68	78.98	77.60	76.09	74.54	75.63	115-120	33.93	512.3	55.5,55.5
125	92.86	93.17	93.24	93.62	92.33	90.65	88.88	90.05	120-125	39.08	551.4	59.7,59.7
130	106.6	108.2	107.6	108.3	106.7	104.2	102.5	103.7	125-130	42.97	594.4	64.3,64.3
135	120.3	121.5	121.3	121.7	120.4	117.9	116.0	117.7	130-135	45.61	640.0	69.3,69.3
140	134.1	134.4	134.4	134.9	134.1	131.0	129.3	130.3	135-140	46.77	686.8	74.3,74.3
145	145.7	146.8	146.8	147.1	145.7	143.3	141.6	143.0	140-145	46.43	733.2	79.4,79.4
150	156.7	158.0	158.2	158.6	157.1	154.8	153.3	154.4	145-150	44.37	777.6	84.2,84.2
155	167.0	168.0	168.2	168.4	167.1	165.0	163.6	164.9	150-155	40.86	818.4	88.6,88.6
160	175.4	176.7	176.9	177.0	175.9	174.0	172.7	173.6	155-160	35.85	854.3	92.5,92.5
165	182.5	183.6	183.8	183.7	182.8	181.0	180.2	181.1	160-165	29.47	883.8	95.7,95.7
170	187.4	187.9	187.9	188.0	187.2	186.7	185.9	186.4	165-170	21.93	905.7	98.98
175	190.5	190.5	190.9	190.7	190.4	189.9	189.8	190.0	170-175	13.50	919.2	99.5,99.5
180	191.3	191.3	191.3	191.3	191.3	191.3	191.3	191.3	175-180	4.562	923.7	100,100
DEG	LUMINOUS INTENSITY:cd									UNIT:lm		

Conical surface Flux(90deg): 225.92 lm

%lum = 24.5%
%lamp = 24.5%

Conical surface Flux(120deg): 325.46 lm

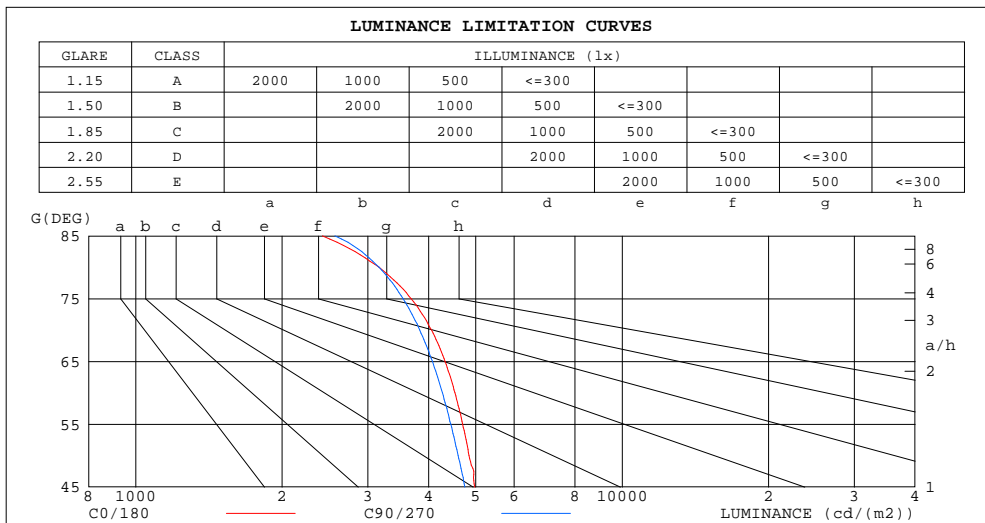
%lum = 35.2%
%lamp = 35.2%

C Range: 0 - 360DEG
C Interval: 5.0DEG
Test Speed: MEDIUM
Temperature:25.3DEG
Operators:Ky
Test Date:

γ Range: 0 - 180DEG
 γ Interval: 0.5DEG
Test System:EVERFINE GO-2000_V1 SYSTEM V2.0.295
Humidity:65.0%
Test Distance:7.220m [K=1.3850]
Remarks:

LUMINANCE LIMITATION CURVES

NAME: CapitalT_325_BLK_HE@350mA_4K_OpalV	TYPE:	WEIGHT:
SPEC.:	DIM.:	SERIAL No.:
MFR.: Darkon	SUR.:	Shielding Angle:



LUMINANCE cd/(m2)		
G(DEG)	C0/180	C90/270
85	2420	2567
80	3164	3162
75	3682	3547
70	4055	3836
65	4325	4074
60	4533	4272
55	4699	4445
50	4843	4601
45	4979	4752

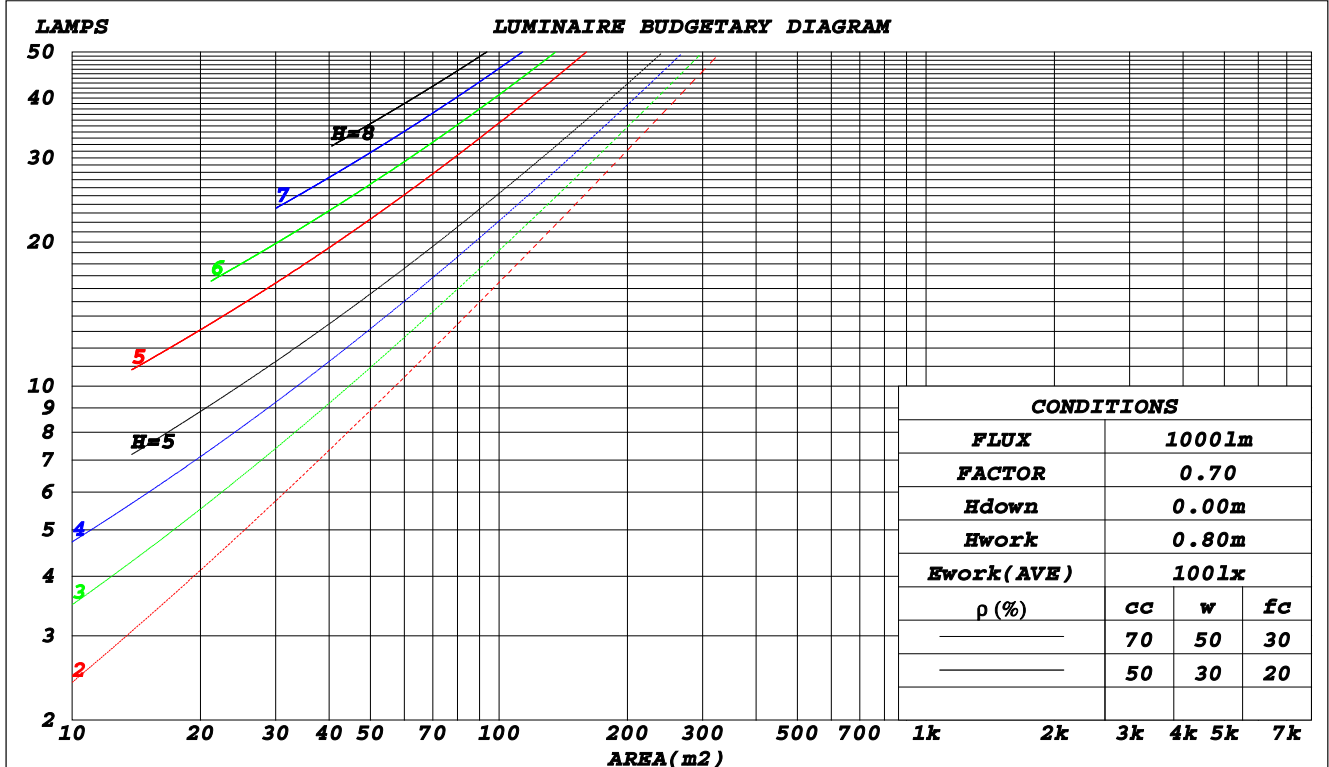
C Range: 0 - 360DEG
C Interval: 5.0DEG
Test Speed: MEDIUM
Temperature: 25.3DEG
Operators: Ky
Test Date:

γ Range: 0 - 180DEG
 γ Interval: 0.5DEG
Test System: EVERFINE GO-2000_V1 SYSTEM V2.0.295
Humidity: 65.0%
Test Distance: 7.220m [K=1.3850]
Remarks:

CU AND LUMINAIRE BUDGETARY ESTIMATE DIAGRAM

NAME: CapitalT_325_BLK_HE@350mA_4K_OpalV	TYPE:	WEIGHT:
SPEC.:	DIM.:	SERIAL No.:
MFR.: Darkon	SUR.:	Shielding Angle:

ρ_{cc}	80%			70%			50%			30%			10%			0
ρ_w	50%	30%	10%	50%	30%	10%	50%	30%	10%	50%	30%	10%	50%	30%	10%	0
ρ_{fc}	20%			20%			20%			20%			20%			0
RCR	RCR:Room Cavity Ratio						Coefficients of Utilization(CU)									
0.0	1.06	1.06	1.06	.97	.97	.97	.80	.80	.80	.65	.65	.65	.51	.51	.51	.44
1.0	.92	.88	.85	.84	.81	.78	.70	.68	.66	.57	.55	.54	.45	.44	.43	.37
2.0	.80	.74	.69	.74	.69	.64	.61	.58	.54	.50	.47	.45	.39	.38	.36	.31
3.0	.71	.63	.58	.65	.59	.53	.54	.49	.46	.44	.41	.38	.35	.32	.31	.26
4.0	.62	.55	.49	.57	.51	.45	.48	.43	.39	.39	.35	.32	.31	.28	.26	.22
5.0	.56	.48	.42	.51	.44	.39	.43	.38	.33	.35	.31	.28	.28	.25	.23	.19
6.0	.50	.42	.36	.46	.39	.34	.39	.33	.29	.32	.28	.25	.25	.22	.20	.17
7.0	.45	.37	.31	.41	.34	.29	.35	.30	.26	.29	.25	.22	.23	.20	.18	.15
8.0	.41	.33	.28	.38	.31	.26	.32	.26	.23	.26	.22	.19	.21	.18	.16	.14
9.0	.37	.30	.25	.34	.28	.23	.29	.24	.20	.24	.20	.17	.20	.17	.14	.12
10.0	.34	.27	.22	.32	.25	.21	.27	.22	.18	.22	.18	.16	.18	.15	.13	.11



C Range: 0 - 360DEG
 C Interval: 5.0DEG
 Test Speed: MEDIUM
 Temperature: 25.3DEG
 Operators: Ky
 Test Date:

γ Range: 0 - 180DEG
 γ Interval: 0.5DEG
 Test System: EVERFINE GO-2000_V1 SYSTEM V2.0.295
 Humidity: 65.0%
 Test Distance: 7.220m [K=1.3850]
 Remarks:

WEC AND CCEC

NAME: CapitalT_325_BLK_HE@350mA_4K_OpalV	TYPE:	WEIGHT:
SPEC.:	DIM.:	SERIAL No.:
MFR.: Darkon	SUR.:	Shielding Angle:

ρ_{cc}	80%			70%			50%			30%			10%			0	
ρ_w	50%	30%	10%	50%	30%	10%	50%	30%	10%	50%	30%	10%	50%	30%	10%	0	
ρ_{fc}	20%			20%			20%			20%			20%			0	
RCR	RCR:Room Cavity Ratio						Wall Exitance Coefficients(WEC)										
0.0																	
1.0	.277	.158	.050	.253	.144	.046	.209	.120	.038	.167	.097	.031	.130	.075	.024		
2.0	.258	.141	.043	.236	.130	.040	.196	.109	.034	.158	.089	.028	.123	.070	.022		
3.0	.239	.127	.038	.219	.117	.035	.182	.098	.030	.147	.081	.025	.115	.064	.020		
4.0	.221	.115	.034	.203	.106	.031	.169	.089	.027	.137	.073	.022	.107	.058	.018		
5.0	.205	.105	.030	.188	.097	.028	.157	.082	.024	.127	.067	.020	.100	.053	.016		
6.0	.191	.096	.027	.175	.089	.025	.146	.075	.022	.119	.062	.018	.093	.049	.015		
7.0	.178	.088	.025	.164	.082	.023	.137	.069	.020	.111	.057	.017	.087	.045	.013		
8.0	.167	.081	.023	.153	.076	.021	.128	.064	.018	.104	.053	.015	.082	.042	.012		
9.0	.157	.076	.021	.144	.070	.020	.121	.060	.017	.098	.049	.014	.077	.039	.011		
10.0	.147	.071	.020	.136	.066	.018	.114	.056	.016	.093	.046	.013	.073	.037	.011		

ρ_{cc}	80%			70%			50%			30%			10%			0
ρ_w	50%	30%	10%	50%	30%	10%	50%	30%	10%	50%	30%	10%	50%	30%	10%	0
ρ_{fc}	20%			20%			20%			20%			20%			0
RCR	RCR:Room Cavity Ratio						Ceiling Cavity Exitance Coefficients(CCEC)									
0.0	.617	.617	.617	.527	.527	.527	.360	.360	.360	.207	.207	.207	.066	.066	.066	
1.0	.608	.586	.567	.520	.503	.488	.356	.346	.337	.205	.200	.196	.066	.064	.063	
2.0	.601	.565	.535	.514	.486	.462	.353	.336	.323	.203	.196	.189	.065	.063	.062	
3.0	.594	.549	.514	.509	.474	.445	.349	.329	.312	.202	.192	.184	.065	.062	.060	
4.0	.587	.537	.500	.504	.464	.434	.346	.324	.306	.200	.190	.181	.064	.062	.059	
5.0	.581	.528	.490	.499	.457	.426	.343	.319	.301	.199	.187	.178	.064	.061	.059	
6.0	.574	.521	.482	.494	.451	.420	.341	.316	.297	.198	.186	.177	.064	.061	.058	
7.0	.569	.515	.477	.489	.446	.416	.338	.313	.295	.196	.184	.175	.063	.060	.058	
8.0	.563	.510	.473	.485	.442	.412	.335	.310	.293	.195	.183	.174	.063	.060	.058	
9.0	.558	.505	.470	.480	.439	.410	.333	.308	.291	.194	.182	.174	.063	.060	.058	
10.0	.553	.502	.467	.477	.436	.408	.331	.306	.290	.193	.181	.173	.063	.060	.057	

C Range: 0 - 360DEG
C Interval: 5.0DEG
Test Speed: MEDIUM
Temperature:25.3DEG
Operators:Ky
Test Date:

γ Range: 0 - 180DEG
 γ Interval: 0.5DEG
Test System:EVERFINE GO-2000_V1 SYSTEM V2.0.295
Humidity:65.0%
Test Distance:7.220m [K=1.3850]
Remarks:

UGR(Unified Glare Rating) Table

NAME: CapitalT_325_BLK_HE@350mA_4K_OpalV	TYPE:	WEIGHT:
SPEC.:	DIM.:	SERIAL No.:
MFR.: Darkon	SUR.:	Shielding Angle:

ceiling/cavity	0.7	0.7	0.5	0.5	0.3	0.7	0.7	0.5	0.5	0.3
walls	0.5	0.3	0.5	0.3	0.3	0.5	0.3	0.5	0.3	0.3
working plane	0.2	0.2	0.2	0.2	0.2	0.2	0.2	0.2	0.2	0.2
Room dimensions	Viewed crosswise					Viewed endwise				
x = 2H y = 2H	14.4	15.3	15.4	16.3	17.4	14.2	15.1	15.1	16.0	17.2
3H	15.8	16.6	16.7	17.5	18.7	15.5	16.3	16.4	17.2	18.5
4H	16.3	17.0	17.2	18.0	19.2	16.0	16.7	17.0	17.7	18.9
6H	16.6	17.3	17.6	18.3	19.5	16.3	17.0	17.3	18.0	19.3
8H	16.7	17.3	17.6	18.3	19.6	16.4	17.1	17.4	18.1	19.3
12H	16.7	17.3	17.7	18.3	19.6	16.5	17.1	17.4	18.1	19.3
4H 2H	14.8	15.6	15.8	16.5	17.7	14.6	15.4	15.6	16.3	17.5
3H	16.3	16.9	17.3	17.9	19.2	16.1	16.7	17.1	17.7	19.0
4H	16.9	17.5	17.9	18.5	19.8	16.7	17.3	17.7	18.3	19.6
6H	17.3	17.8	18.4	18.8	20.2	17.1	17.6	18.2	18.6	20.0
8H	17.4	17.9	18.5	18.9	20.3	17.3	17.7	18.3	18.7	20.1
12H	17.5	17.9	18.5	18.9	20.3	17.3	17.7	18.4	18.8	20.1
8H 4H	17.0	17.5	18.1	18.5	19.8	16.8	17.3	17.8	18.3	19.6
6H	17.6	17.9	18.6	19.0	20.3	17.4	17.8	18.4	18.8	20.2
8H	17.7	18.1	18.8	19.1	20.5	17.6	17.9	18.6	19.0	20.4
12H	17.8	18.1	18.9	19.2	20.6	17.7	18.0	18.8	19.0	20.5
12H 4H	17.0	17.4	18.0	18.4	19.8	16.8	17.2	17.8	18.2	19.6
6H	17.5	17.9	18.6	18.9	20.3	17.4	17.7	18.4	18.8	20.2
8H	17.8	18.0	18.8	19.1	20.5	17.6	17.9	18.7	19.0	20.4
Variations with the observer position at spacings:										
S = 1.0H	+ 0.2 / - 0.2					+ 0.2 / - 0.2				
1.5H	+ 0.2 / - 0.3					+ 0.2 / - 0.3				
2.0H	+ 0.2 / - 0.3					+ 0.2 / - 0.3				

CIE Pub.117 Corrected 923.7 lm Total Lamp Luminous Flux.(8log(F/F0) = -0.3)

C Range: 0 - 360DEG
C Interval: 5.0DEG
Test Speed: MEDIUM
Temperature:25.3DEG
Operators:Ky
Test Date:

γ Range: 0 - 180DEG
γ Interval: 0.5DEG
Test System:EVERFINE GO-2000_V1 SYSTEM V2.0.295
Humidity:65.0%
Test Distance:7.220m [K=1.3850]
Remarks:

UTILIZATION FACTORS TABLE

NAME: CapitalT_325_BLK_HE@350mA_4K_OpalV	TYPE:	WEIGHT:
SPEC.:	DIM.:	SERIAL No.:
MFR.: Darkon	SUR.:	Shielding Angle:

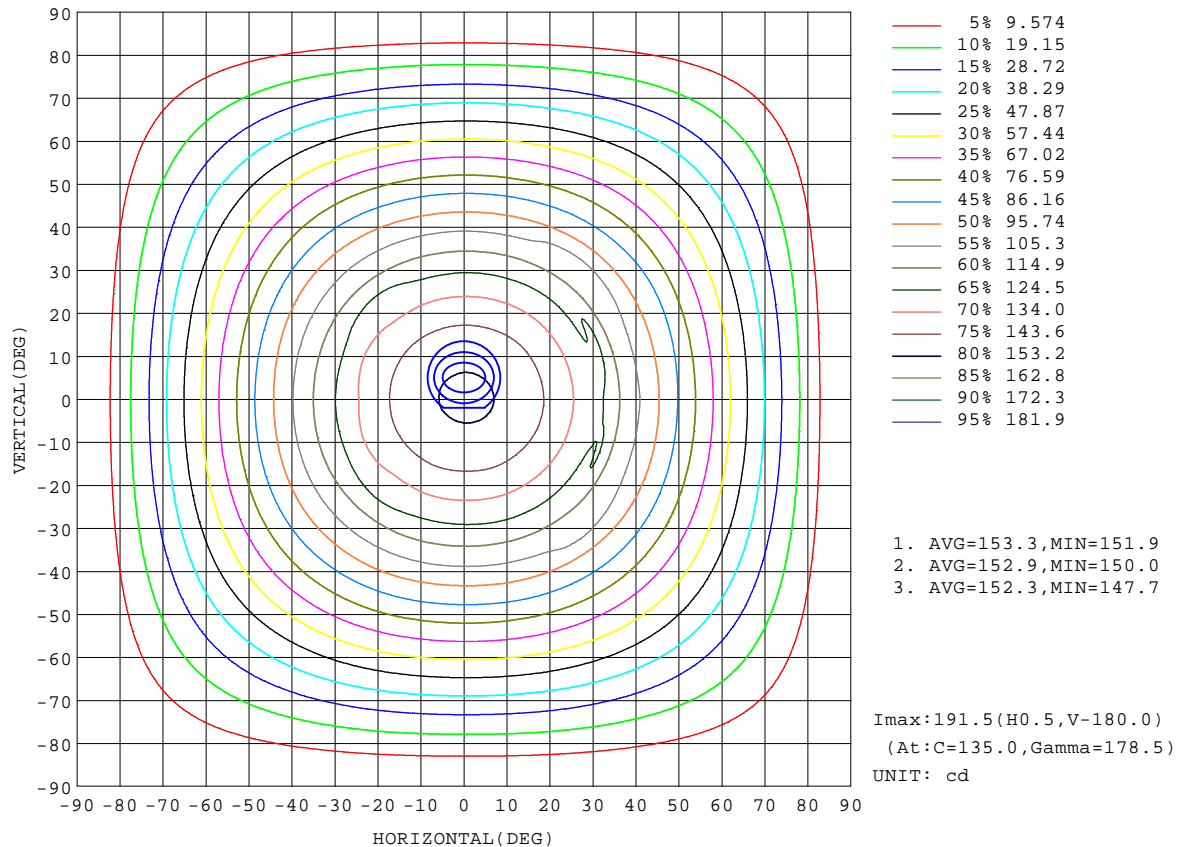
REFLECTANCE										
Ceiling	0.8	0.8	0.8	0.7	0.7	0.7	0.5	0.5	0.5	0
Walls	0.7	0.5	0.3	0.7	0.5	0.3	0.7	0.5	0.3	0
Working plane	0.2	0.2	0.2	0.2	0.2	0.2	0.2	0.2	0.2	0
ROOM INDEX	UTILIZATION FACTORS(PERCENT) $k(RI) \times RCR = 5$									
$k = 0.60$	43	32	26	40	30	25	35	27	23	15
0.80	52	41	34	49	38	32	42	34	29	19
1.00	60	48	41	55	45	39	48	41	35	22
1.25	67	56	48	62	52	46	53	46	40	26
1.50	72	61	54	66	57	51	56	50	45	28
2.00	79	70	63	73	65	59	61	55	51	31
2.50	83	75	68	77	69	64	64	59	55	33
3.00	87	79	73	80	73	68	67	62	58	35
4.00	91	85	80	84	78	74	70	66	63	37
5.00	94	89	84	86	82	78	72	69	66	38
ROOM INDEX	UF(total)									Direct
According to DIN EN 13032-2 2004										
Suspended										
SHRNOM = 1.25										

C Range: 0 - 360DEG
C Interval: 5.0DEG
Test Speed: MEDIUM
Temperature: 25.3DEG
Operators: Ky
Test Date:

γ Range: 0 - 180DEG
 γ Interval: 0.5DEG
Test System: EVERFINE GO-2000_V1 SYSTEM V2.0.295
Humidity: 65.0%
Test Distance: 7.220m [K=1.3850]
Remarks:

ISOCANDELA DIAGRAM

NAME: CapitalT_325_BLK_HE@350mA_4K_OpalV	TYPE:	WEIGHT:
SPEC.:	DIM.:	SERIAL No.:
MFR.: Darkon	SUR.:	Shielding Angle:

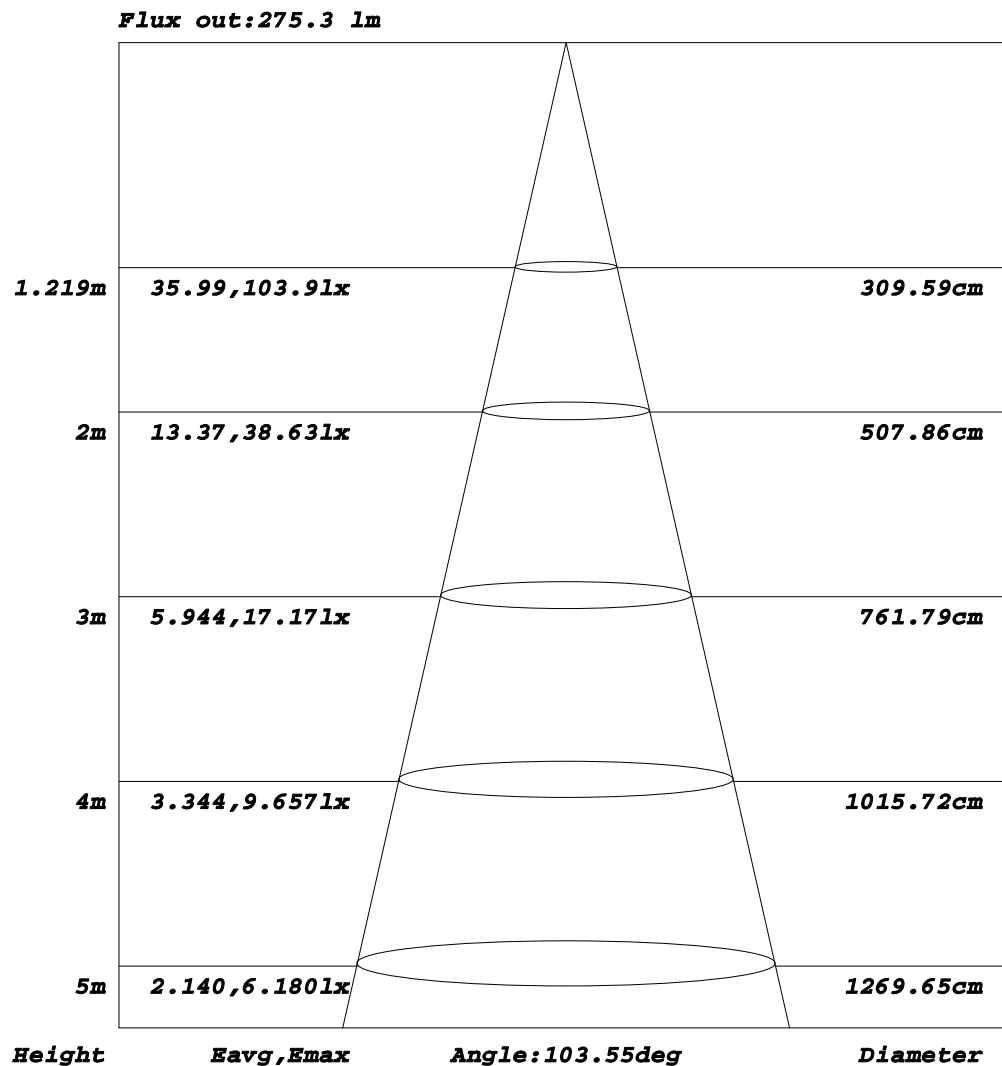


C Range: 0 - 360DEG
C Interval: 5.0DEG
Test Speed: MEDIUM
Temperature: 25.3DEG
Operators: Ky
Test Date:

γ Range: 0 - 180DEG
γ Interval: 0.5DEG
Test System: EVERFINE GO-2000_V1 SYSTEM V2.0.295
Humidity: 65.0%
Test Distance: 7.220m [K=1.3850]
Remarks:

AAI Figure

NAME: CapitalT_325_BLK_HE@350mA_4K_OpalV	TYPE:	WEIGHT:
SPEC.:	DIM.:	SERIAL No.:
MFR.: Darkon	SUR.:	Shielding Angle:



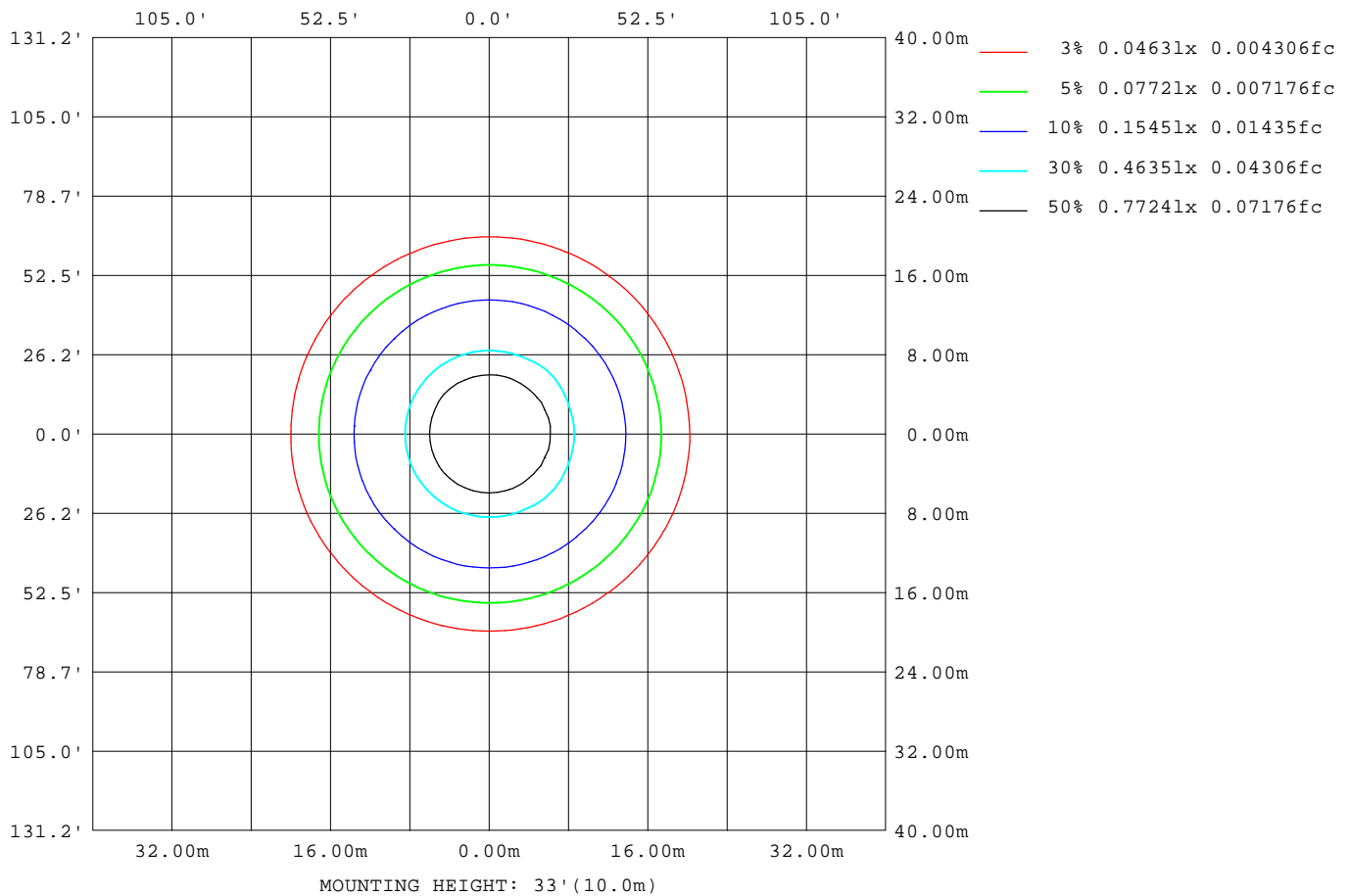
Note: The Curves indicate the illuminated area and the average illumination when the luminaire is at different distance.

C Range: 0 - 360DEG
C Interval: 5.0DEG
Test Speed: MEDIUM
Temperature: 25.3DEG
Operators: Ky
Test Date:

γ Range: 0 - 180DEG
γ Interval: 0.5DEG
Test System: EVERFINE GO-2000_V1 SYSTEM V2.0.295
Humidity: 65.0%
Test Distance: 7.220m [K=1.3850]
Remarks:

ISOLUX DIAGRAM

NAME: CapitalT_325_BLK_HE@350mA_4K_OpalV	TYPE:	WEIGHT:
SPEC.:	DIM.:	SERIAL No.:
MFR.: Darkon	SUR.:	Shielding Angle:



C Range: 0 - 360DEG
C Interval: 5.0DEG
Test Speed: MEDIUM
Temperature: 25.3DEG
Operators: Ky
Test Date:

γ Range: 0 - 180DEG
γ Interval: 0.5DEG
Test System: EVERFINE GO-2000_V1 SYSTEM V2.0.295
Humidity: 65.0%
Test Distance: 7.220m [K=1.3850]
Remarks:

LED Avg.L Report

NAME: CapitalT_325_BLK_HE@350mA_4K_OpalV	TYPE:	WEIGHT:
SPEC.:	DIM.:	SERIAL No.:
MFR.: Darkon	SUR.:	Shielding Angle:

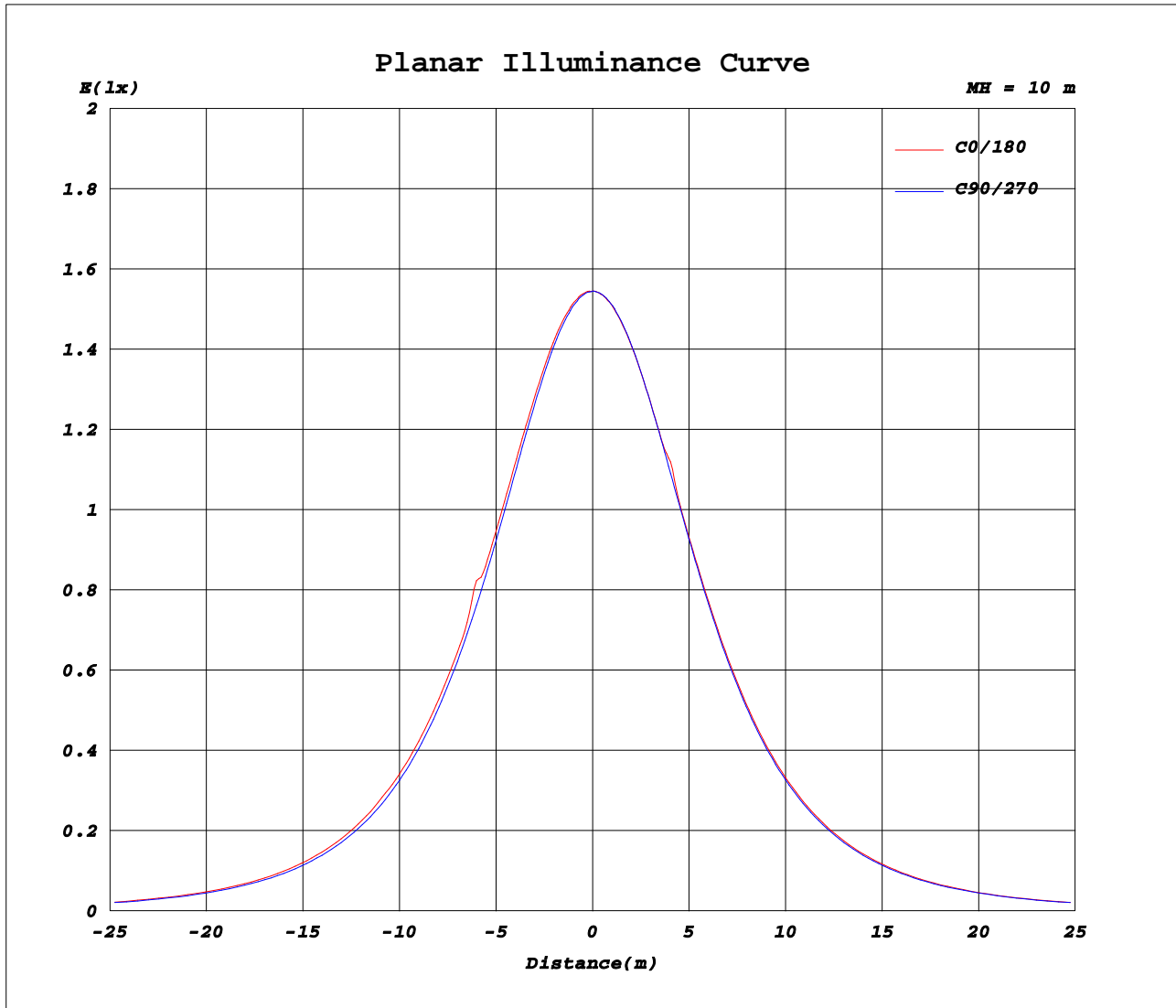
AvgL	cd/m2
L_0~180(65)av	4237
L_0~180(75)av	3579
L_0~180(85)av	2259
L_90~270(65)av	4067
L_90~270(75)av	3527
L_90~270(85)av	2508
L_45(65)av	4152
L_45(75)av	3560
L_45(85)av	2428

Standard: GB/T 29293-2012

C Range: 0 - 360DEG
C Interval: 5.0DEG
Test Speed: MEDIUM
Temperature: 25.3DEG
Operators: Ky
Test Date:

γ Range: 0 - 180DEG
γ Interval: 0.5DEG
Test System: EVERFINE GO-2000_V1 SYSTEM V2.0.295
Humidity: 65.0%
Test Distance: 7.220m [K=1.3850]
Remarks:

Planar Illuminance Curve



C Range: 0 - 360DEG
C Interval: 5.0DEG
Test Speed: MEDIUM
Temperature: 25.3DEG
Operators: Ky
Test Date:

γ Range: 0 - 180DEG
γ Interval: 0.5DEG
Test System: EVERFINE GO-2000_V1 SYSTEM V2.0.295
Humidity: 65.0%
Test Distance: 7.220m [K=1.3850]
Remarks:

LUMINOUS DISTRIBUTION INTENSITY DATA

NAME: CapitalT_325_BLK_HE@350mA_4K_OpalV	TYPE:	WEIGHT:
SPEC.:	DIM.:	SERIAL No.:
MFR.: Darkon	SUR.:	Shielding Angle:

Table--1

UNIT: cd

<div> <div>C(DEG)</div> <div>γ (DEG)</div> </div>	0	5	10	15	20	25	30	35	40	45	50	55	60	65	70	75	80	85	90
0	154	154	154	154	154	154	154	154	154	154	154	154	154	154	154	154	154	154	155
5	154	154	154	154	154	154	154	154	154	154	154	154	154	154	154	153	153	153	153
10	152	152	152	152	151	151	151	151	151	151	151	151	151	151	151	151	151	150	150
15	148	148	147	147	147	147	147	147	147	147	147	146	146	146	146	146	146	146	146
20	142	142	142	142	141	141	141	141	141	141	140	140	140	140	140	140	140	139	139
25	135	135	135	135	134	134	134	134	134	133	133	133	133	133	132	132	132	132	132
30	128	128	127	127	126	126	126	125	125	125	124	124	124	124	124	123	123	123	123
35	117	118	118	118	118	118	117	117	116	115	115	115	114	114	114	114	114	113	113
40	107	107	107	107	107	107	107	107	107	107	106	106	105	104	104	103	103	103	103
45	96.6	96.6	96.5	96.3	96.1	95.9	95.5	95.2	94.8	94.5	94.1	93.8	93.6	93.3	93.0	92.8	92.5	92.4	92.2
50	85.5	85.4	85.3	85.2	85.0	84.8	84.4	84.1	83.7	83.3	83.0	82.8	82.5	82.2	82.0	81.7	81.5	81.3	81.2
55	74.0	73.9	73.8	73.7	73.5	73.3	73.0	72.7	72.3	72.0	71.7	71.4	71.2	70.9	70.7	70.5	70.3	70.1	70.0
60	62.2	62.2	62.1	61.9	61.8	61.5	61.3	61.0	60.7	60.4	60.2	59.9	59.7	59.5	59.3	59.1	58.9	58.7	58.6
65	50.2	50.1	50.0	49.9	49.8	49.6	49.4	49.2	48.9	48.7	48.5	48.3	48.1	48.0	47.8	47.6	47.5	47.4	47.3
70	38.1	38.1	38.0	38.0	37.9	37.8	37.6	37.4	37.2	37.0	36.9	36.8	36.7	36.6	36.5	36.3	36.2	36.1	36.0
75	26.2	26.2	26.2	26.2	26.1	26.1	26.0	25.9	25.8	25.7	25.6	25.6	25.6	25.6	25.5	25.4	25.3	25.3	25.2
80	15.1	15.1	15.1	15.2	15.2	15.2	15.2	15.2	15.2	15.2	15.2	15.2	15.3	15.3	15.3	15.2	15.2	15.1	15.1
85	5.79	5.83	5.86	5.89	5.92	5.95	5.97	6.00	6.02	6.05	6.10	6.15	6.20	6.24	6.25	6.23	6.20	6.17	6.14
90	0.44	0.44	0.44	0.45	0.46	0.47	0.49	0.51	0.53	0.55	0.57	0.59	0.62	0.64	0.60	0.60	0.68	0.68	0.69
95	7.22	7.17	7.15	7.18	7.25	7.38	7.56	7.76	7.97	8.18	8.34	8.48	8.62	8.73	8.85	8.95	9.04	9.10	9.15
100	18.9	18.8	18.8	18.8	18.9	19.1	19.3	19.6	19.8	20.1	20.3	20.4	20.6	20.7	20.8	20.9	21.1	21.2	21.2
105	32.9	32.8	32.8	32.8	32.8	32.9	33.1	33.4	33.6	33.8	33.9	34.1	34.2	34.2	34.4	34.5	34.6	34.7	34.8
110	47.9	47.8	47.8	47.7	47.8	47.8	48.0	48.2	48.3	48.5	48.6	48.6	48.7	48.8	48.8	48.9	49.0	49.1	49.1
115	63.1	63.0	63.0	62.9	63.0	63.0	63.1	63.3	63.4	63.5	63.5	63.6	63.6	63.6	63.6	63.7	63.7	63.8	63.8
120	78.2	78.1	78.1	78.1	78.1	78.2	78.3	78.3	78.4	78.5	78.5	78.5	78.5	78.5	78.5	78.5	78.6	78.6	78.7
125	92.9	92.8	92.8	92.8	92.8	92.8	92.9	93.0	93.1	93.2	93.2	93.1	93.1	93.1	93.1	93.1	93.2	93.2	93.2
130	107	106	106	106	106	107	107	108	108	108	108	108	107	107	107	107	107	107	108
135	120	120	120	120	120	120	121	121	121	121	121	121	121	121	121	121	121	121	121
140	134	136	137	138	139	139	138	137	136	134	134	134	134	134	134	134	134	134	134
145	146	146	146	146	146	146	146	146	147	147	147	147	146	146	146	146	146	147	147
150	157	157	157	157	157	157	157	158	158	158	158	158	158	157	157	158	158	158	158
155	167	167	167	167	167	167	167	168	168	168	168	168	168	168	168	168	168	168	168
160	175	175	175	176	176	176	176	176	177	177	177	176	176	176	176	176	176	177	177
165	182	182	182	182	182	183	183	183	183	184	183	183	183	183	183	183	183	184	184
170	187	187	187	188	188	188	188	188	188	188	188	188	188	188	188	188	188	188	188
175	190	190	190	190	190	190	190	190	190	191	191	191	191	191	191	191	191	191	191
180	191	191	191	191	191	191	191	191	191	191	191	191	191	191	191	191	191	191	191

C Range: 0 - 360DEG
C Interval: 5.0DEG
Test Speed: MEDIUM
Temperature: 25.3DEG
Operators: Ky
Test Date:
γ Range: 0 - 180DEG
γ Interval: 0.5DEG
Test System: EVERFINE GO-2000_V1 SYSTEM V2.0.295
Humidity: 65.0%
Test Distance: 7.220m [K=1.3850]
Remarks:

LUMINOUS DISTRIBUTION INTENSITY DATA

NAME: CapitalT_325_BLK_HE@350mA_4K_OpalV	TYPE:	WEIGHT:
SPEC.:	DIM.:	SERIAL No.:
MFR.: Darkon	SUR.:	Shielding Angle:

Table--2

UNIT: cd

C(DEG) γ (DEG)	95	100	105	110	115	120	125	130	135	140	145	150	155	160	165	170	175	180	185
0	155	154	154	154	154	154	154	154	154	154	154	154	154	154	154	154	154	154	154
5	153	153	153	153	153	153	153	153	153	153	153	153	153	153	153	153	154	154	154
10	150	150	150	150	150	150	150	150	150	150	150	151	151	151	151	151	151	151	151
15	146	146	146	146	146	146	146	146	146	146	146	146	146	146	146	146	146	146	146
20	139	139	139	139	139	140	140	140	140	140	140	140	140	140	140	140	140	140	140
25	132	132	132	132	132	132	132	132	132	133	133	134	134	134	134	133	133	133	133
30	123	123	123	123	123	124	124	125	125	125	125	125	124	124	124	124	124	124	124
35	113	113	113	113	114	114	114	114	114	114	114	115	115	115	115	115	115	115	115
40	103	103	103	103	103	104	104	104	104	104	104	105	105	105	105	105	105	105	105
45	92.3	92.3	92.4	92.6	92.7	92.8	93.0	93.1	93.3	93.5	93.7	93.9	94.1	94.1	94.2	94.2	94.1	94.1	94.1
50	81.2	81.3	81.4	81.5	81.6	81.8	81.9	82.1	82.2	82.4	82.7	82.9	83.1	83.1	83.2	83.1	83.1	83.0	83.0
55	70.0	70.1	70.2	70.3	70.4	70.6	70.7	70.8	70.9	71.1	71.3	71.5	71.7	71.8	71.8	71.8	71.7	71.7	71.6
60	58.6	58.7	58.8	58.9	59.0	59.1	59.2	59.3	59.4	59.6	59.8	60.0	60.1	60.2	60.2	60.2	60.1	60.0	60.0
65	47.3	47.3	47.4	47.5	47.6	47.6	47.7	47.7	47.8	48.0	48.1	48.3	48.4	48.4	48.4	48.3	48.2	48.1	48.1
70	36.0	36.1	36.1	36.2	36.3	36.3	36.3	36.3	36.3	36.4	36.5	36.6	36.6	36.6	36.6	36.5	36.4	36.3	36.3
75	25.2	25.2	25.3	25.3	25.3	25.3	25.2	25.2	25.1	25.2	25.2	25.2	25.2	25.2	25.1	24.9	24.8	24.7	24.7
80	15.1	15.1	15.1	15.1	15.1	15.0	14.9	14.9	14.8	14.8	14.7	14.6	14.6	14.5	14.3	14.2	14.0	13.9	13.9
85	6.15	6.16	6.17	6.17	6.13	6.07	5.99	5.91	5.83	5.76	5.70	5.64	5.56	5.46	5.34	5.21	5.11	5.02	5.01
90	0.70	0.71	0.00	0.00	0.69	0.65	0.61	0.57	0.53	0.50	0.47	0.45	0.42	0.40	0.38	0.37	0.35	0.34	0.34
95	9.15	9.13	9.09	9.03	8.95	8.85	8.74	8.60	8.45	8.24	8.02	7.80	7.57	7.35	7.16	6.98	6.85	6.75	6.79
100	21.2	21.2	21.1	21.0	21.0	20.9	20.8	20.7	20.5	20.2	20.0	19.7	19.4	19.1	18.9	18.7	18.5	18.4	18.5
105	34.8	34.8	34.7	34.6	34.6	34.5	34.5	34.4	34.3	34.0	33.8	33.6	33.3	33.1	32.9	32.7	32.5	32.4	32.4
110	49.2	49.2	49.2	49.2	49.1	49.1	49.1	49.0	48.9	48.8	48.6	48.4	48.2	48.0	47.8	47.6	47.5	47.3	47.3
115	63.9	63.9	63.9	63.9	64.0	64.0	64.0	64.0	64.0	63.9	63.7	63.5	63.4	63.2	63.0	62.8	62.7	62.5	62.5
120	78.7	78.7	78.7	78.8	78.8	78.9	78.9	79.0	79.0	78.9	78.8	78.6	78.4	78.3	78.1	77.9	77.7	77.6	77.6
125	93.3	93.3	93.4	93.4	93.5	93.5	93.6	93.6	93.6	93.5	93.4	93.3	93.2	93.0	92.8	92.7	92.5	92.3	92.2
130	108	107	107	107	107	108	108	108	108	108	108	107	107	107	107	107	107	107	107
135	121	121	121	121	121	121	121	122	122	121	121	121	121	121	120	120	120	120	120
140	134	134	134	134	134	134	135	135	135	135	135	134	134	134	134	134	134	134	134
145	147	146	146	146	146	146	147	147	147	147	147	146	146	146	146	146	146	146	146
150	158	158	158	158	158	158	158	159	159	158	158	158	157	157	157	157	157	157	157
155	168	168	168	168	168	168	168	168	168	168	168	168	167	167	167	167	167	167	167
160	177	177	177	177	177	177	177	177	177	177	177	176	176	176	176	176	176	176	176
165	184	183	183	183	183	183	183	184	184	184	183	183	183	183	183	183	183	183	183
170	188	188	188	188	188	188	188	188	188	188	188	188	188	187	187	187	187	187	187
175	191	191	191	191	191	191	191	191	191	191	191	191	191	191	191	191	190	190	190
180	191	191	191	191	191	191	191	191	191	191	191	191	191	191	191	191	191	191	191

C Range: 0 - 360DEG
C Interval: 5.0DEG
Test Speed: MEDIUM
Temperature: 25.3DEG
Operators: Ky
Test Date:
γ Range: 0 - 180DEG
γ Interval: 0.5DEG
Test System: EVERFINE GO-2000_V1 SYSTEM V2.0.295
Humidity: 65.0%
Test Distance: 7.220m [K=1.3850]
Remarks:

LUMINOUS DISTRIBUTION INTENSITY DATA

NAME: CapitalT_325_BLK_HE@350mA_4K_OpalV	TYPE:	WEIGHT:
SPEC.:	DIM.:	SERIAL No.:
MFR.: Darkon	SUR.:	Shielding Angle:

Table--3

UNIT: cd

<div> <div>C (DEG)</div> <div>γ (DEG)</div> </div>	190	195	200	205	210	215	220	225	230	235	240	245	250	255	260	265	270	275	280
0	154	154	154	154	154	154	154	154	154	154	154	154	154	154	154	154	155	155	154
5	154	154	154	154	154	154	154	154	154	154	154	154	154	154	154	154	154	154	154
10	151	151	151	151	151	151	151	151	151	151	151	151	151	151	151	151	151	151	151
15	146	146	146	146	146	146	146	146	146	146	146	146	146	146	146	146	146	146	146
20	140	140	140	140	140	140	140	140	140	140	140	140	140	140	140	140	140	140	140
25	134	134	134	134	134	134	133	133	132	132	132	132	132	132	132	132	132	132	132
30	124	124	124	125	126	126	127	128	127	126	125	124	123	123	123	123	123	123	124
35	115	115	115	115	115	115	115	114	114	114	114	114	114	114	114	114	114	114	114
40	105	105	105	105	105	104	104	104	104	104	104	103	103	103	103	103	103	103	103
45	94.1	94.1	94.1	94.0	93.9	93.7	93.6	93.4	93.2	93.0	92.8	92.6	92.5	92.4	92.4	92.4	92.5	92.5	92.7
50	83.0	82.9	82.9	82.8	82.7	82.6	82.5	82.3	82.1	81.9	81.7	81.5	81.4	81.3	81.3	81.3	81.3	81.4	81.5
55	71.6	71.5	71.4	71.4	71.2	71.1	71.0	70.8	70.7	70.5	70.3	70.1	70.0	69.9	69.9	69.9	70.0	70.0	70.2
60	59.9	59.9	59.8	59.7	59.6	59.5	59.4	59.3	59.1	59.0	58.8	58.7	58.6	58.5	58.5	58.5	58.5	58.6	58.7
65	48.1	48.0	48.0	47.9	47.9	47.8	47.7	47.7	47.5	47.4	47.3	47.1	47.1	47.0	47.0	47.0	47.1	47.1	47.2
70	36.2	36.2	36.2	36.2	36.2	36.2	36.1	36.1	36.0	35.9	35.8	35.8	35.7	35.7	35.7	35.8	35.8	35.8	35.9
75	24.7	24.7	24.7	24.7	24.8	24.8	24.9	24.9	24.9	24.9	24.8	24.8	24.8	24.8	24.8	24.9	24.9	24.9	25.0
80	13.9	14.0	14.0	14.1	14.2	14.3	14.4	14.5	14.5	14.6	14.6	14.6	14.6	14.7	14.7	14.8	14.8	14.8	14.8
85	5.03	5.07	5.13	5.20	5.30	5.40	5.49	5.58	5.62	5.66	5.68	5.71	5.74	5.77	5.81	5.84	5.86	5.85	5.84
90	0.33	0.33	0.33	0.33	0.33	0.32	0.31	0.30	0.29	0.27	0.26	0.25	0.24	0.23	0.23	0.24	0.24	0.24	0.25
95	6.86	6.96	7.06	7.12	7.13	7.13	7.12	7.12	7.14	7.16	7.17	7.18	7.16	7.11	7.06	7.00	6.95	6.94	6.93
100	18.6	18.7	18.8	18.8	18.8	18.8	18.7	18.7	18.7	18.7	18.8	18.8	18.7	18.6	18.5	18.4	18.4	18.4	18.4
105	32.5	32.5	32.6	32.5	32.4	32.3	32.2	32.1	32.1	32.1	32.1	32.0	32.0	31.8	31.7	31.6	31.5	31.5	31.5
110	47.4	47.4	47.4	47.3	47.1	46.9	46.7	46.5	46.4	46.3	46.3	46.2	46.1	45.9	45.8	45.6	45.5	45.6	45.6
115	62.5	62.5	62.4	62.3	62.1	61.8	61.5	61.3	61.1	61.0	60.9	60.8	60.6	60.4	60.2	60.1	59.9	60.0	60.0
120	77.5	77.5	77.4	77.2	77.0	76.7	76.4	76.1	75.9	75.7	75.5	75.4	75.2	75.0	74.8	74.6	74.5	74.6	74.7
125	92.2	92.1	92.0	91.8	91.5	91.2	90.9	90.7	90.4	90.3	90.1	89.9	89.7	89.4	89.2	89.0	88.9	88.9	89.0
130	107	106	106	106	106	105	105	104	104	104	104	104	104	103	103	103	102	103	103
135	120	120	120	120	119	119	118	118	118	118	118	118	117	117	117	116	116	116	116
140	134	134	133	133	132	132	131	131	131	131	131	131	131	130	130	130	129	129	130
145	146	146	145	145	145	144	144	143	143	143	143	143	143	143	142	142	142	142	142
150	157	157	157	156	156	156	155	155	155	155	155	155	154	154	154	153	153	153	154
155	167	167	167	167	166	166	165	165	165	165	165	165	165	164	164	164	164	164	164
160	176	176	175	175	175	175	174	174	174	174	174	174	174	174	173	173	173	173	173
165	183	183	183	182	182	182	181	181	181	181	181	181	181	181	181	180	180	180	181
170	187	187	187	187	187	187	187	187	187	187	187	187	186	186	186	186	186	186	186
175	190	190	190	190	190	190	190	190	190	190	190	190	190	190	190	190	190	190	190
180	191	191	191	191	191	191	191	191	191	191	191	191	191	191	191	191	191	191	191

C Range: 0 - 360DEG
C Interval: 5.0DEG
Test Speed: MEDIUM
Temperature: 25.3DEG
Operators: Ky
Test Date:
γ Range: 0 - 180DEG
γ Interval: 0.5DEG
Test System: EVERFINE GO-2000_V1 SYSTEM V2.0.295
Humidity: 65.0%
Test Distance: 7.220m [K=1.3850]
Remarks:

LUMINOUS DISTRIBUTION INTENSITY DATA

NAME: CapitalT_325_BLK_HE@350mA_4K_OpalV	TYPE:	WEIGHT:
SPEC.:	DIM.:	SERIAL No.:
MFR.: Darkon	SUR.:	Shielding Angle:

Table--4
UNIT: cd

γ (DEG) \ C (DEG)	285	290	295	300	305	310	315	320	325	330	335	340	345	350	355				
0	154	154	154	154	154	154	154	154	154	154	154	154	154	154	154				
5	154	154	154	154	154	154	154	154	154	154	154	154	154	154	154				
10	151	151	151	151	151	151	151	151	151	151	151	151	151	152	152				
15	146	146	146	147	147	147	147	147	147	147	147	147	147	147	147				
20	140	140	140	141	141	141	141	141	141	141	141	141	142	142	142				
25	133	133	133	133	133	133	134	134	134	134	134	134	134	135	135				
30	124	124	124	124	125	125	125	125	125	126	126	126	126	127	128				
35	114	114	114	115	115	115	116	116	116	117	117	117	117	117	117				
40	103	104	105	106	108	109	110	110	109	108	107	106	106	106	107				
45	92.8	93.0	93.3	93.6	93.9	94.2	94.6	94.9	95.2	95.4	95.7	95.9	96.1	96.3	96.5				
50	81.6	81.8	82.1	82.4	82.7	83.1	83.4	83.9	84.4	84.9	85.3	85.5	85.7	85.7	85.6				
55	70.3	70.5	70.7	71.0	71.3	71.6	71.9	72.2	72.5	72.7	72.9	73.1	73.4	73.6	73.8				
60	58.8	58.9	59.2	59.4	59.7	60.0	60.3	60.5	60.8	61.0	61.2	61.4	61.6	61.8	62.0				
65	47.3	47.4	47.6	47.8	48.0	48.3	48.5	48.7	48.8	49.0	49.2	49.4	49.5	49.7	50.0				
70	35.9	36.0	36.1	36.3	36.5	36.6	36.8	36.9	37.0	37.1	37.2	37.4	37.5	37.7	37.9				
75	25.0	25.0	25.1	25.2	25.3	25.4	25.4	25.5	25.5	25.5	25.5	25.6	25.7	25.8	26.0				
80	14.8	14.8	14.8	14.8	14.8	14.8	14.9	14.8	14.8	14.7	14.7	14.7	14.8	14.8	14.9				
85	5.82	5.80	5.80	5.80	5.80	5.80	5.78	5.72	5.66	5.60	5.55	5.54	5.56	5.62	5.69				
90	0.25	0.26	0.27	0.29	0.30	0.32	0.34	0.35	0.36	0.37	0.38	0.39	0.40	0.42	0.43				
95	6.92	6.92	6.90	6.86	6.83	6.80	6.78	6.78	6.80	6.83	6.88	6.93	6.98	7.05	7.13				
100	18.4	18.5	18.4	18.4	18.3	18.3	18.2	18.3	18.3	18.4	18.5	18.5	18.6	18.7	18.8				
105	31.5	31.5	31.5	31.5	31.5	31.5	31.6	31.7	31.8	32.0	32.2	32.3	32.5	32.6	32.8				
110	45.7	45.8	45.9	45.9	45.9	45.9	46.0	46.2	46.4	46.6	46.8	47.1	47.3	47.5	47.7				
115	60.1	60.2	60.3	60.4	60.5	60.6	60.8	61.0	61.3	61.6	61.9	62.1	62.4	62.6	62.9				
120	74.8	74.9	75.1	75.2	75.3	75.4	75.6	75.9	76.2	76.5	76.8	77.1	77.4	77.6	77.9				
125	89.1	89.3	89.4	89.6	89.7	89.9	90.1	90.4	90.7	91.1	91.4	91.8	92.1	92.3	92.6				
130	103	103	103	103	104	104	104	104	105	105	106	106	106	106	107				
135	117	117	117	117	117	117	118	118	118	119	119	120	120	120	120				
140	130	130	130	130	130	130	130	132	133	135	136	137	137	137	136				
145	142	143	143	143	143	143	143	143	144	144	145	145	145	146	146				
150	154	154	154	154	154	154	154	155	155	156	156	157	157	157	157				
155	164	165	165	165	165	165	165	165	165	166	166	166	167	167	167				
160	173	174	174	174	174	174	174	174	174	175	175	176	176	176	176				
165	181	181	181	181	181	181	181	181	182	182	182	182	182	183	183				
170	186	186	186	186	186	186	186	186	187	187	187	187	187	187	187				
175	190	190	190	190	190	190	190	190	190	190	190	190	190	190	190				
180	191	191	191	191	191	191	191	191	191	191	191	191	191	191	191				

C Range: 0 - 360DEG
C Interval: 5.0DEG
Test Speed: MEDIUM
Temperature: 25.3DEG
Operators: Ky
Test Date:
 γ Range: 0 - 180DEG
 γ Interval: 0.5DEG
Test System: EVERFINE GO-2000_V1 SYSTEM V2.0.295
Humidity: 65.0%
Test Distance: 7.220m [K=1.3850]
Remarks: