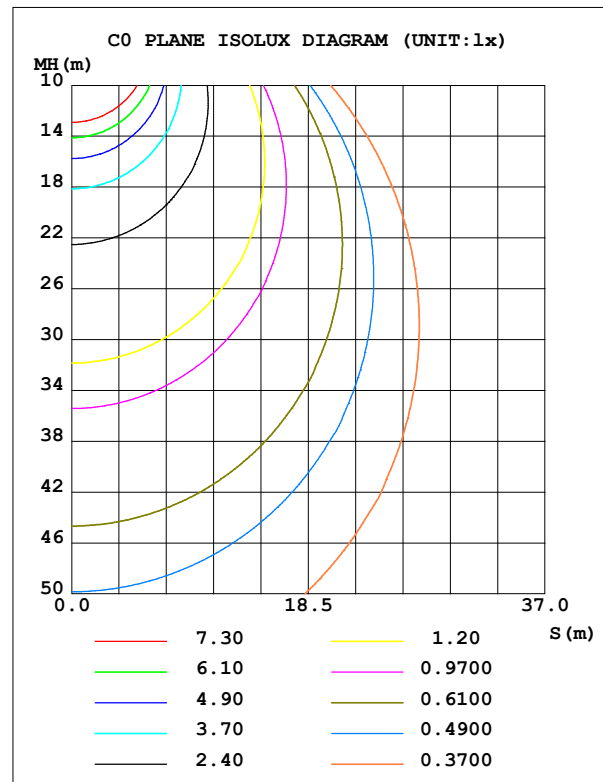
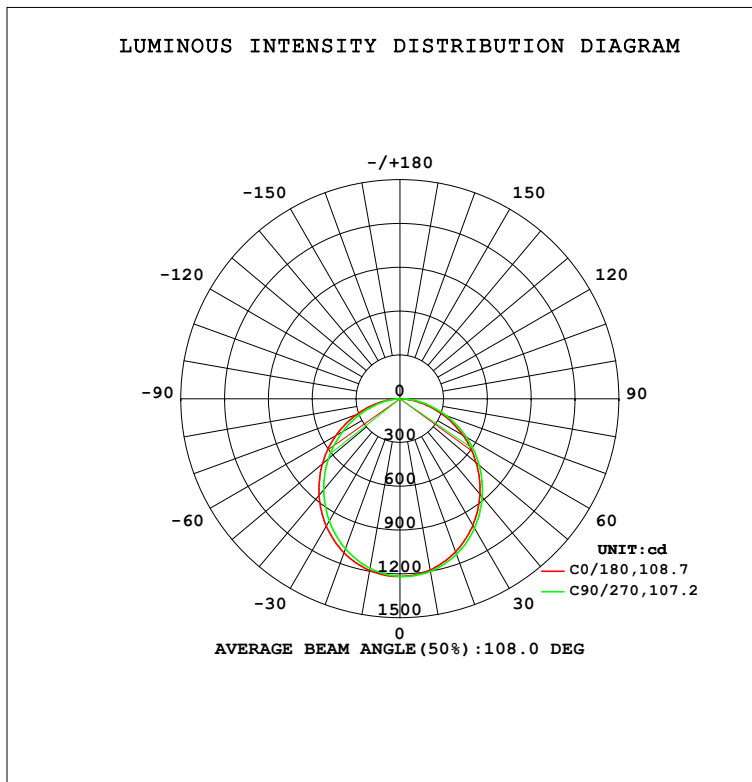


LUMINAIRE PHOTOMETRIC TEST REPORT

Test:U:239.97V I:0.1331A P:29.755W PF:0.9314 Freq:50.09Hz Lamp Flux:3319.04x1 lm		
NAME: BAY-KON_1195 x 295_THREDBO WHITE_YPP VL2 2MM HE_TYPERE_XK	WEIGHT:	
SPEC.:	DIM.:	SERIAL No.:
MFR.: DARKON	SUR.:	Shielding Angle:

DATA OF LAMP		PHOTOMETRIC DATA				Eff: 111.55 lm/W
4 x LIMOLUX 560mm 1300lm 840 HV ADV5		I _{max} (cd)	1217	S/MH (C0/180)	1.24	
NOMINAL POWER (W)		LOR (%)	100.0	S/MH (C90/270)	1.19	
RATED VOLTAGE (V)	220.0	TOTAL FLUX (lm)	3319.0	η UP,DN (C0-180)	0.0,51.7	
NOMINAL FLUX (lm)	3319.04	CIE CLASS	DIRECT	η UP,DN (C180-360)	0.0,48.3	
LAMPS INSIDE	1	η up (%)	0.0	CIBSE SHR NOM	1.25	
TEST VOLTAGE (V)	230	η down (%)	100.0	CIBSE SHR MAX	1.35	



C Range: 0 - 360DEG
C Interval: 22.5DEG
Test Speed: HIGH
Temperature:25.3DEG
Operators:JEFF
Test Date:26 November 2020

γ Range: 0 - 90DEG
γ Interval: 1.0DEG
Test System:EVERFINE GO-2000A_V1 SYSTEM V2.0.366
Humidity:65.0%
Test Distance:7.250m [K=1.0000]
Remarks:

ZONAL FLUX DIAGRAM

ZONAL FLUX DIAGRAM:

γ	C0	C45	C90	C135	C180	C225	C270	C315	γ	Φ zone	Φ total	%lum, lamp
10	1190	1192	1200	1203	1194	1192	1179	1174	0- 10	114.8	114.8	3.46,3.46
20	1115	1117	1133	1141	1122	1116	1093	1086	10- 20	326.7	441.5	13.3,13.3
30	1003	1000	1022	1035	1008	999.5	967.0	960.8	20- 30	489.0	930.5	28,28
40	852.0	856.5	876.6	893.8	862.6	852.1	812.7	807.2	30- 40	580.5	1511	45.5,45.5
50	682.3	681.3	708.5	727.7	693.7	681.8	639.6	633.4	40- 50	592.4	2103	63.4,63.4
60	497.3	496.2	525.4	545.2	508.3	496.7	455.0	447.9	50- 60	527.5	2631	79.3,79.3
70	304.0	304.9	334.5	353.7	314.3	307.1	266.8	259.5	60- 70	396.9	3028	91.2,91.2
80	122.8	126.5	153.7	168.6	131.4	128.6	99.48	91.48	70- 80	226.1	3254	98,98
90	2.297	2.357	18.34	25.58	3.250	2.893	2.683	2.783	80- 90	65.12	3319	100,100
100									90-100			
110									100-110			
120									110-120			
130									120-130			
140									130-140			
150									140-150			
160									150-160			
170									160-170			
180									170-180			
DEG	LUMINOUS INTENSITY:cd									UNIT:lm		

Conical surface Flux(90deg): 1810.7 lm

%lum = 54.6%

%lamp = 54.6%

Conical surface Flux(120deg): 2630.9 lm

%lum = 79.3%

%lamp = 79.3%

C Range: 0 - 360DEG
C Interval: 22.5DEG
Test Speed: HIGH
Temperature:25.3DEG
Operators:JEFF
Test Date:26 November 2020

γ Range: 0 - 90DEG
 γ Interval: 1.0DEG
Test System:EVERFINE GO-2000A_V1 SYSTEM V2.0.366
Humidity:65.0%
Test Distance:7.250m [K=1.0000]
Remarks:

```

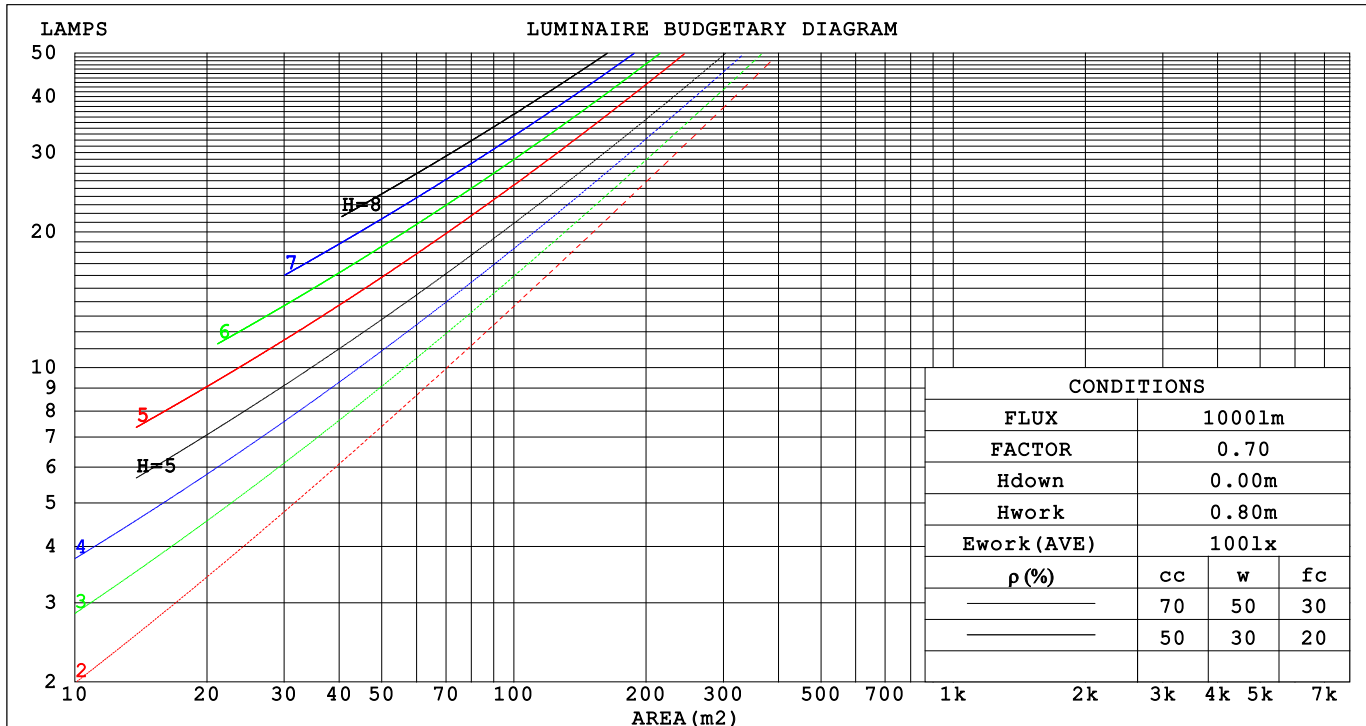
γ Range: 0 - 90DEG
γ Interval: 1.0DEG
Test System:EVERFINE GO-2000A_V1 SYSTEM V2.0.366
Humidity:65.0%
Test Distance:7.250m [K=1.0000]
Remarks:

```

CU AND LUMINAIRE BUDGETARY ESTIMATE DIAGRAM

Test:U:239.97V I:0.1331A P:29.755W PF:0.9314 Freq:50.09Hz Lamp Flux:3319.04x1 lm		
NAME: BAY-KON_1195 x 295_THREDBO WHITE_YPP VL2 2MM HE TOP-LED	WEIGHT:	
SPEC.:	DIM.:	SERIAL No.:
MFR.: DARKON	SUR.:	Shielding Angle:

pcc	80%			70%			50%			30%			10%			0
pw	50%	30%	10%	50%	30%	10%	50%	30%	10%	50%	30%	10%	50%	30%	10%	0
pfc	20%			20%			20%			20%			20%			0
RCR	RCR:Room Cavity Ratio															



C Range: 0 - 360DEG
C Interval: 22.5DEG
Test Speed: HIGH
Temperature:25.3DEG
Operators:JEFF
Test Date:26 November 2020

γ Range: 0 - 90DEG
γ Interval: 1.0DEG
Test System:EVERFINE GO-2000A_V1 SYSTEM V2.0.366
Humidity:65.0%
Test Distance:7.250m [K=1.0000]
Remarks:

WEC AND CCEC

Test:U:239.97V I:0.1331A P:29.755W PF:0.9314 Freq:50.09Hz Lamp Flux:3319.04x1 lm		
NAME: BAY-KON_1195 x 295_THREDBO WHITE_YPP VL2 2MM HE TOP-FLK	WEIGHT:	
SPEC.:	DIM.:	SERIAL No.:
MFR.: DARKON	SUR.:	Shielding Angle:

pcc	80%			70%			50%			30%			10%			0
pw	50%	30%	10%	50%	30%	10%	50%	30%	10%	50%	30%	10%	50%	30%	10%	0
pfc	20%			20%			20%			20%			20%			0
RCR	RCR:Room Cavity Ratio						Wall Exitance Coefficients (WEC)									
0.0																
1.0	.308	.175	.055	.301	.172	.055	.288	.165	.053	.275	.159	.051	.264	.153	.049	
2.0	.290	.159	.049	.283	.156	.048	.272	.151	.047	.261	.146	.046	.251	.142	.045	
3.0	.268	.143	.043	.262	.141	.042	.252	.137	.042	.243	.133	.041	.234	.129	.040	
4.0	.247	.129	.038	.243	.127	.038	.233	.124	.037	.225	.121	.036	.217	.118	.036	
5.0	.229	.117	.034	.224	.115	.034	.216	.113	.033	.209	.110	.033	.202	.108	.032	
6.0	.212	.106	.030	.208	.105	.030	.201	.103	.030	.194	.101	.030	.188	.099	.029	
7.0	.198	.098	.028	.194	.097	.028	.188	.095	.027	.182	.093	.027	.176	.091	.027	
8.0	.185	.090	.025	.182	.089	.025	.176	.088	.025	.170	.086	.025	.165	.085	.025	
9.0	.173	.084	.023	.170	.083	.023	.165	.082	.023	.160	.080	.023	.156	.079	.023	
10.0	.163	.078	.022	.160	.077	.022	.156	.076	.021	.151	.075	.021	.147	.074	.021	

pcc	80%			70%			50%			30%			10%			0
pw	50%	30%	10%	50%	30%	10%	50%	30%	10%	50%	30%	10%	50%	30%	10%	0
pfc	20%			20%			20%			20%			20%			0
RCR	RCR:Room Cavity Ratio						Ceiling Cavity Exitance Coefficients(CCEC)									
0.0	.190	.190	.190	.163	.163	.163	.111	.111	.111	.064	.064	.064	.020	.020	.020	
1.0	.180	.156	.135	.154	.134	.116	.105	.092	.080	.061	.053	.047	.019	.017	.015	
2.0	.172	.132	.098	.147	.114	.085	.101	.079	.059	.058	.046	.035	.019	.015	.011	
3.0	.164	.114	.075	.141	.099	.065	.097	.068	.045	.056	.040	.027	.018	.013	.009	
4.0	.156	.101	.059	.134	.087	.051	.092	.061	.036	.053	.036	.021	.017	.012	.007	
5.0	.149	.091	.047	.128	.078	.041	.088	.055	.029	.051	.032	.017	.016	.010	.006	
6.0	.142	.082	.039	.122	.071	.034	.084	.050	.024	.049	.029	.014	.016	.010	.005	
7.0	.135	.075	.033	.116	.065	.029	.080	.046	.021	.047	.027	.012	.015	.009	.004	
8.0	.129	.069	.029	.111	.060	.025	.077	.042	.018	.045	.025	.011	.014	.008	.004	
9.0	.122	.064	.025	.106	.056	.022	.073	.039	.016	.043	.023	.009	.014	.008	.003	
10.0	.117	.060	.023	.101	.052	.020	.070	.037	.014	.041	.022	.008	.013	.007	.003	

C Range: 0 - 360DEG
C Interval: 22.5DEG
Test Speed: HIGH
Temperature:25.3DEG
Operators:JEFF
Test Date:26 November 2020

γ Range: 0 - 90DEG
γ Interval: 1.0DEG
Test System:EVERFINE GO-2000A_V1 SYSTEM V2.0.366
Humidity:65.0%
Test Distance:7.250m [K=1.0000]
Remarks:

UGR(Unified Glare Rating) Table

Test:U:239.97V I:0.1331A P:29.755W PF:0.9314 Freq:50.09Hz Lamp Flux:3319.04x1 lm											
NAME: BAY-KON_1195 x 295_THREDBO WHITE_YPP VL2 2MM HE_T000A_LK								WEIGHT:			
SPEC.:					DIM.:			SERIAL No.:			
MFR.: DARKON					SUR.:			Shielding Angle:			
ceiling/cavity	0.7	0.7	0.5	0.5	0.3	0.7	0.7	0.5	0.5	0.3	
walls	0.5	0.3	0.5	0.3	0.3	0.5	0.3	0.5	0.3	0.3	
working plane	0.2	0.2	0.2	0.2	0.2	0.2	0.2	0.2	0.2	0.2	
Room dimensions		Viewed crosswise					Viewed endwise				
x = 2H y = 2H		12.4	13.9	12.6	14.1	14.3	12.6	14.1	12.8	14.3	14.5
	3H	13.8	15.2	14.1	15.5	15.7	14.1	15.5	14.4	15.8	16.0
	4H	14.4	15.7	14.7	16.0	16.2	14.8	16.1	15.1	16.4	16.6
	6H	14.8	16.0	15.1	16.3	16.6	15.3	16.5	15.6	16.8	17.1
	8H	14.9	16.1	15.2	16.4	16.7	15.5	16.7	15.8	17.0	17.2
	12H	15.0	16.1	15.3	16.4	16.7	15.6	16.8	16.0	17.1	17.4
4H	2H	13.0	14.3	13.3	14.6	14.8	13.1	14.5	13.4	14.7	15.0
	3H	14.6	15.8	15.0	16.1	16.4	14.9	16.0	15.2	16.3	16.6
	4H	15.3	16.4	15.7	16.7	17.0	15.6	16.7	16.0	17.0	17.3
	6H	15.8	16.8	16.2	17.1	17.5	16.3	17.2	16.7	17.6	17.9
	8H	16.0	16.9	16.4	17.2	17.6	16.5	17.4	16.9	17.8	18.1
	12H	16.1	16.9	16.5	17.3	17.7	16.7	17.5	17.1	17.9	18.3
8H	4H	15.6	16.4	16.0	16.8	17.2	15.9	16.7	16.3	17.1	17.5
	6H	16.2	17.0	16.7	17.4	17.8	16.6	17.4	17.1	17.8	18.2
	8H	16.5	17.1	16.9	17.5	18.0	17.0	17.6	17.4	18.0	18.5
	12H	16.6	17.2	17.1	17.6	18.1	17.3	17.8	17.7	18.3	18.7
12H	4H	15.6	16.4	16.0	16.8	17.2	15.9	16.7	16.3	17.1	17.5
	6H	16.3	16.9	16.7	17.4	17.8	16.7	17.3	17.1	17.7	18.2
	8H	16.6	17.1	17.0	17.6	18.0	17.0	17.6	17.5	18.1	18.5
Variations with the observer position at spacings:											
S = 1.0H	+ 0.2 / - 0.2					+ 0.2 / - 0.2					
1.5H	+ 0.2 / - 0.3					+ 0.2 / - 0.3					
2.0H	+ 0.2 / - 0.3					+ 0.2 / - 0.3					

CIE Pub.117, 3319 lm Total Lamp Luminous Flux Correct (8log(F/F0) = 4.2)

C Range: 0 - 360DEG
C Interval: 22.5DEG
Test Speed: HIGH
Temperature:25.3DEG
Operators:JEFF
Test Date:26 November 2020

γ Range: 0 - 90DEG
γ Interval: 1.0DEG
Test System:EVERFINE GO-2000A_V1 SYSTEM V2.0.366
Humidity:65.0%
Test Distance:7.250m [K=1.0000]
Remarks:

UTILIZATION FACTORS TABLE

Test:U:239.97V I:0.1331A P:29.755W PF:0.9314 Freq:50.09Hz Lamp Flux:3319.04x1 lm		
NAME: BAY-KON_1195 x 295_THREDBO WHITE_YPP VL2 2MM HE_TORNALEK	WEIGHT:	
SPEC.:	DIM.:	SERIAL No.:
MFR.: DARKON	SUR.:	Shielding Angle:

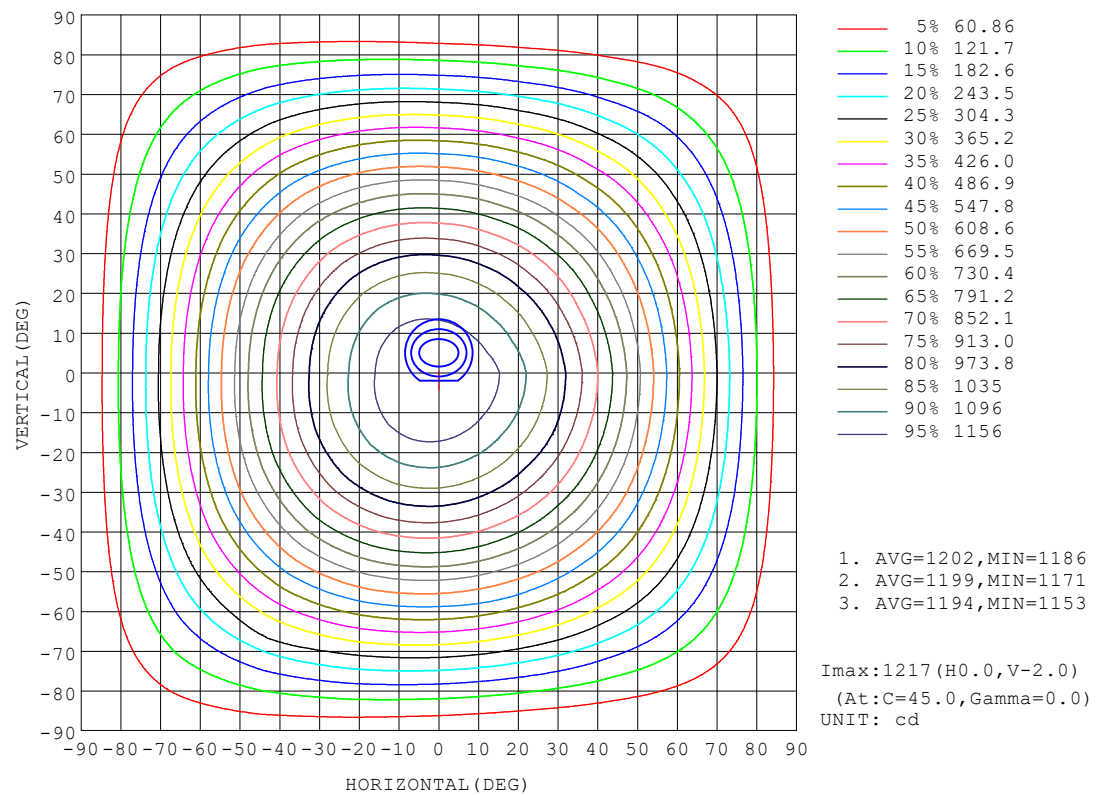
REFLECTANCE										
Ceiling	0.8	0.8	0.8	0.7	0.7	0.7	0.5	0.5	0.5	0
Walls	0.7	0.5	0.3	0.7	0.5	0.3	0.7	0.5	0.3	0
Working plane	0.2	0.2	0.2	0.2	0.2	0.2	0.2	0.2	0.2	0
ROOM INDEX	UTILIZATION FACTORS (PERCENT) k(RI) x RCR = 5									
k = 0.60	58	47	40	57	46	39	56	46	39	33
0.80	68	57	49	67	56	49	65	55	49	42
1.00	76	65	58	75	65	58	73	66	57	50
1.25	83	73	66	82	72	66	79	71	65	58
1.50	88	79	72	87	78	71	84	76	70	63
2.00	95	87	80	93	86	80	90	83	78	70
2.50	99	91	85	97	90	84	93	87	83	74
3.00	102	96	90	100	94	89	96	91	87	78
4.00	106	101	96	104	99	95	100	96	92	83
5.00	109	104	100	106	102	98	102	98	95	86
ROOM INDEX	UF(total)									Direct
According to DIN EN 13032-2 2004			Suspended					SHRNOM = 1.25		

C Range: 0 - 360DEG
C Interval: 22.5DEG
Test Speed: HIGH
Temperature:25.3DEG
Operators:JEFF
Test Date:26 November 2020

γ Range: 0 - 90DEG
γ Interval: 1.0DEG
Test System:EVERFINE GO-2000A_V1 SYSTEM V2.0.366
Humidity:65.0%
Test Distance:7.250m [K=1.0000]
Remarks:

ISOCANDELA DIAGRAM

Test:U:239.97V I:0.1331A P:29.755W PF:0.9314 Freq:50.09Hz Lamp Flux:3319.04x1 lm		
NAME: BAY-KON_1195 x 295_THREDBO WHITE_YPP VL2 2MM HE_TORNALEK	WEIGHT:	
SPEC.:	DIM.:	SERIAL No.:
MFR.: DARKON	SUR.:	Shielding Angle:

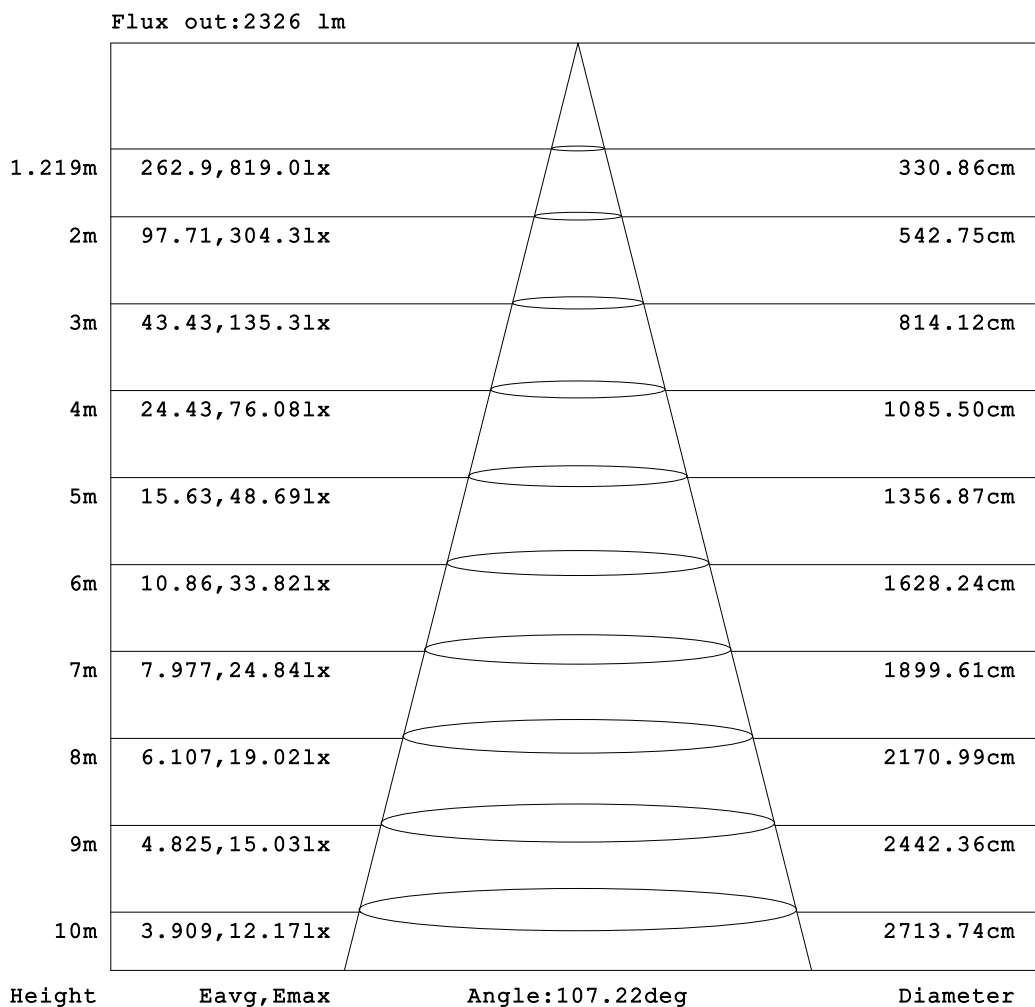


C Range: 0 - 360DEG
C Interval: 22.5DEG
Test Speed: HIGH
Temperature:25.3DEG
Operators:JEFF
Test Date:26 November 2020

γ Range: 0 - 90DEG
 γ Interval: 1.0DEG
Test System:EVERFINE GO-2000A_V1 SYSTEM V2.0.366
Humidity:65.0%
Test Distance:7.250m [K=1.0000]
Remarks:

AAI Figure

Test:U:239.97V I:0.1331A P:29.755W PF:0.9314 Freq:50.09Hz Lamp Flux:3319.04x1 lm		
NAME: BAY-KON_1195 x 295_THREDBO WHITE_YPP VL2 2MM HE TYPE:LED	WEIGHT:	
SPEC.:	DIM.:	SERIAL No.:
MFR.: DARKON	SUR.:	Shielding Angle:



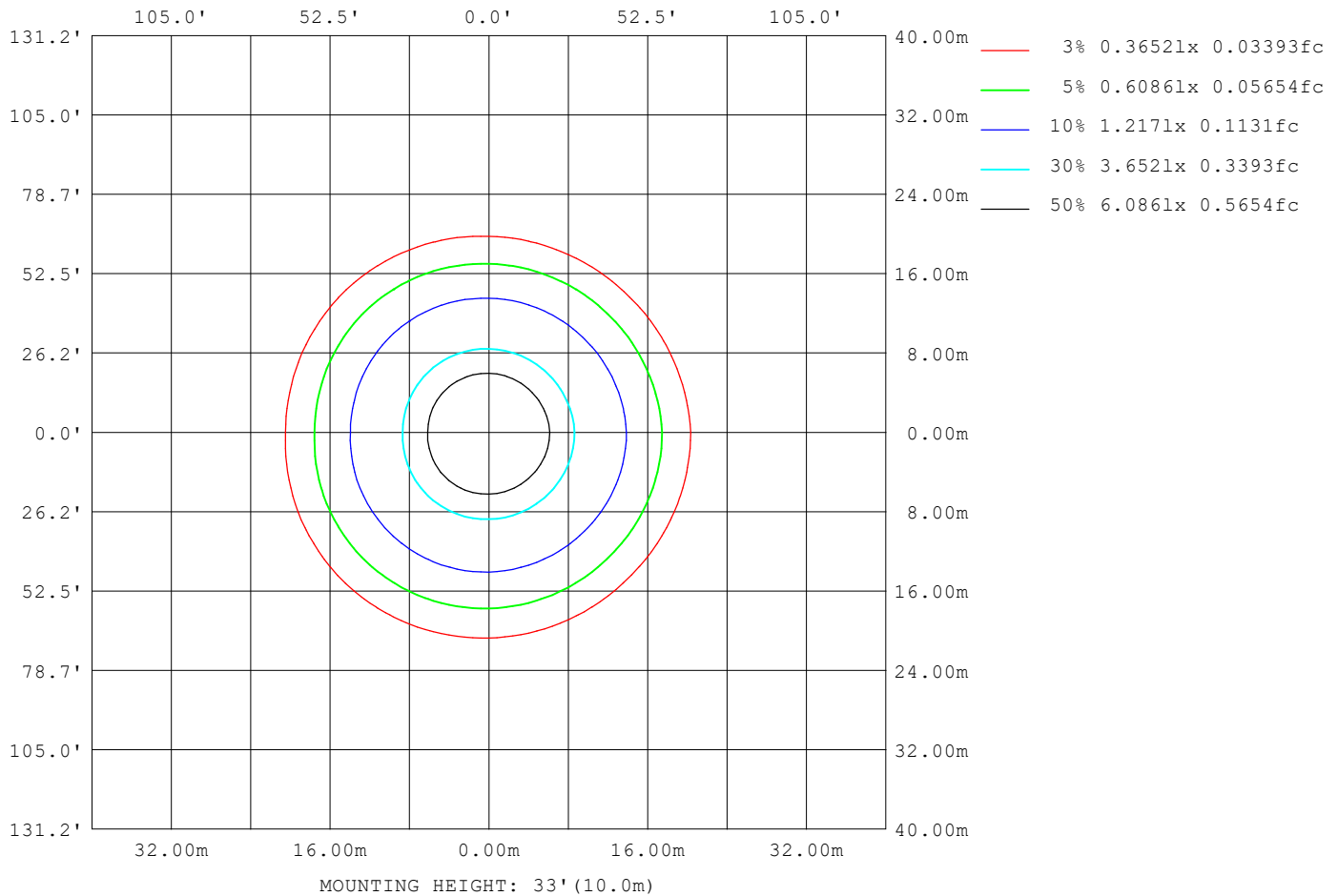
Note:The Curves indicate the illuminated area and the average illumination when the luminaire is at different distance.

C Range: 0 - 360DEG
C Interval: 22.5DEG
Test Speed: HIGH
Temperature:25.3DEG
Operators:JEFF
Test Date:26 November 2020

γ Range: 0 - 90DEG
γ Interval: 1.0DEG
Test System:EVERFINE GO-2000A_V1 SYSTEM V2.0.366
Humidity:65.0%
Test Distance:7.250m [K=1.0000]
Remarks:

ISOLUX DIAGRAM

Test:U:239.97V I:0.1331A P:29.755W PF:0.9314 Freq:50.09Hz Lamp Flux:3319.04x1 lm		
NAME: BAY-KON_1195 x 295_THREDBO WHITE_YPP VL2 2MM HE_TORNALEK	WEIGHT:	
SPEC.:	DIM.:	SERIAL No.:
MFR.: DARKON	SUR.:	Shielding Angle:



C Range: 0 - 360DEG
C Interval: 22.5DEG
Test Speed: HIGH
Temperature:25.3DEG
Operators:JEFF
Test Date:26 November 2020

γ Range: 0 - 90DEG
γ Interval: 1.0DEG
Test System:EVERFINE GO-2000A_V1 SYSTEM V2.0.366
Humidity:65.0%
Test Distance:7.250m [K=1.0000]
Remarks:

LED Avg.L Report

Test:U:239.97V I:0.1331A P:29.755W PF:0.9314 Freq:50.09Hz Lamp Flux:3319.04x1 lm		
NAME: BAY-KON_1195 x 295_THREDBO WHITE_YPP VL2 2MM HE_T000A_LK	WEIGHT:	
SPEC.:	DIM.:	SERIAL No.:
MFR.: DARKON	SUR.:	Shielding Angle:

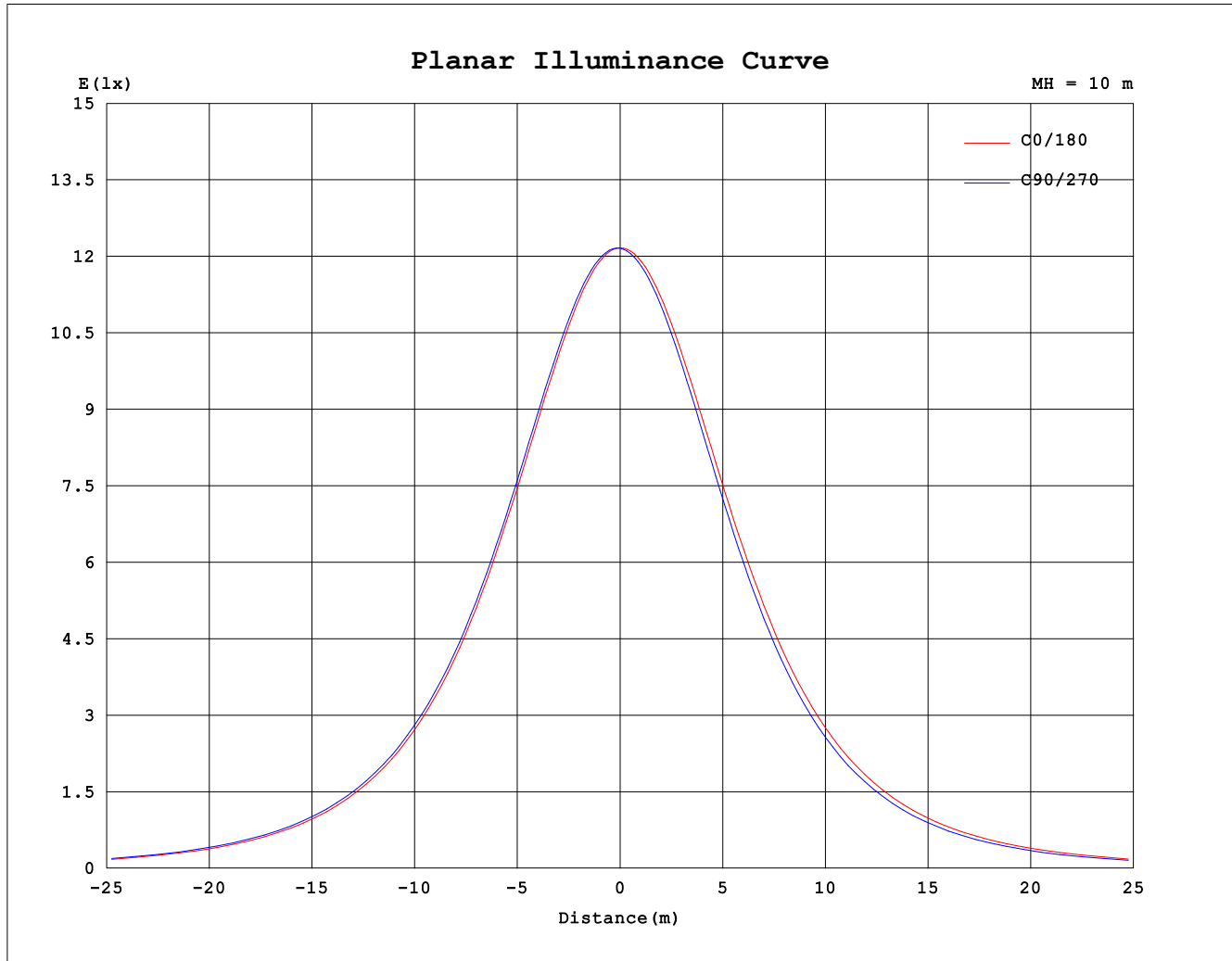
AvgL	cd/m2
L_0~180 (65) av	2727
L_0~180 (75) av	2350
L_0~180 (85) av	1742
L_90~270 (65) av	2653
L_90~270 (75) av	2299
L_90~270 (85) av	1814
L_45 (65) av	2694
L_45 (75) av	2350
L_45 (85) av	1857

Standard: GB/T 29293-2012

C Range: 0 - 360DEG
C Interval: 22.5DEG
Test Speed: HIGH
Temperature:25.3DEG
Operators:JEFF
Test Date:26 November 2020

γ Range: 0 - 90DEG
γ Interval: 1.0DEG
Test System:EVERFINE GO-2000A_V1 SYSTEM V2.0.366
Humidity:65.0%
Test Distance:7.250m [K=1.0000]
Remarks:

Planar Illuminance Curve



C Range: 0 - 360DEG
C Interval: 22.5DEG
Test Speed: HIGH
Temperature: 25.3DEG
Operators: JEFF
Test Date: 26 November 2020

γ Range: 0 - 90DEG
 γ Interval: 1.0DEG
Test System: EVERFINE GO-2000A_V1 SYSTEM V2.0.366
Humidity: 65.0%
Test Distance: 7.250m [K=1.0000]
Remarks:

```

γ Range: 0 - 90DEG
γ Interval: 1.0DEG
Test System:EVERFINE GO-2000A_V1 SYSTEM V2.0.366
Humidity:65.0%
Test Distance:7.250m [K=1.0000]
Remarks:

```