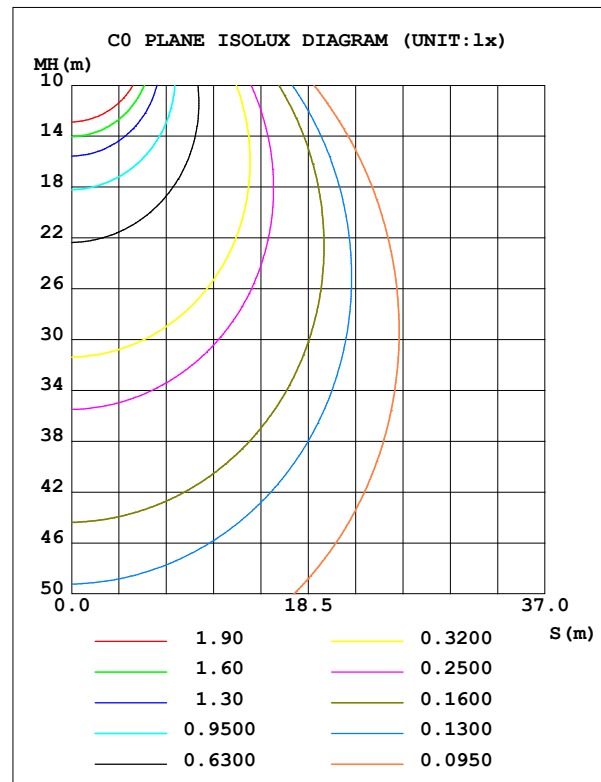
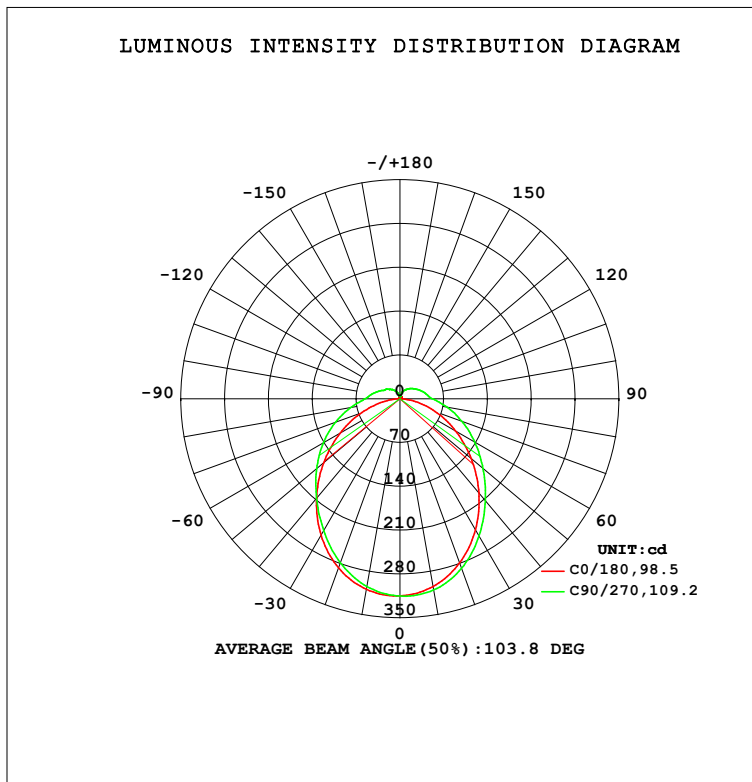


LUMINAIRE PHOTOMETRIC TEST REPORT

Test:U:240.03V I:0.1081A P:17.259W PF:0.6649 Freq:50.09Hz Lamp Flux:990.294x1 lm		
NAME: SUPER MINI GRAZER_1073_WHT_OPAL V_DPAL-007_3000K	TYPE:LED	WEIGHT:
SPEC.:	DIM.:	SERIAL No.:
MFR.: DARKON	SUR.:	Shielding Angle:

DATA OF LAMP		PHOTOMETRIC DATA				Eff: 57.38 lm/W
MODEL	DPAL-007 3000K	I _{max} (cd)	316.0	S/MH (C0/180)	1.20	
NOMINAL POWER (W)		LOR (%)	100.0	S/MH (C90/270)	1.16	
RATED VOLTAGE (V)	220.0	TOTAL FLUX (lm)	990.29	η UP,DN (C0-180)	5.6,44.4	
NOMINAL FLUX (lm)	990.294	CIE CLASS	SEMI-D.	η UP,DN (C180-360)	5.8,44.2	
LAMPS INSIDE	1	η up (%)	11.4	CIBSE SHR NOM	1.25	
TEST VOLTAGE (V)	230	η down (%)	88.6	CIBSE SHR MAX	1.35	



C Range: 0 - 360DEG
C Interval: 22.5DEG
Test Speed: HIGH
Temperature:25.3DEG
Operators:JEFF
Test Date:24 September 2020

γ Range: 0 - 180DEG
γ Interval: 1.0DEG
Test System:EVERFINE GO-2000A_V1 SYSTEM V2.0.366
Humidity:65.0%
Test Distance:7.250m [K=1.0000]
Remarks:

ZONAL FLUX DIAGRAM

ZONAL FLUX DIAGRAM:

γ	C0	C45	C90	C135	C180	C225	C270	C315	γ	Φ zone	Φ total	%lum, lamp
10	304.7	307.7	310.2	310.7	309.2	307.0	304.6	304.2	0- 10	29.72	29.72	3,3
20	279.2	284.7	288.3	290.2	287.3	283.4	278.9	278.2	10- 20	83.78	113.5	11.5,11.5
30	241.6	249.1	253.0	256.0	252.1	248.6	243.6	241.9	20- 30	123.0	236.5	23.9,23.9
40	196.4	206.7	212.4	213.9	207.4	207.8	207.5	200.5	30- 40	142.6	379.1	38.3,38.3
50	148.8	163.7	173.3	170.6	159.2	167.9	173.7	161.0	40- 50	143.5	522.6	52.8,52.8
60	102.6	123.6	137.9	129.6	110.8	129.2	141.5	123.1	50- 60	129.6	652.1	65.9,65.9
70	60.26	87.67	105.3	92.49	65.04	92.63	109.5	87.69	60- 70	105.3	757.4	76.5,76.5
80	22.49	55.11	75.98	58.67	24.50	59.36	78.90	55.81	70- 80	74.78	832.2	84,84
90	0.8128	31.92	51.96	34.13	0.6804	37.17	55.88	35.10	80- 90	45.16	877.4	88.6,88.6
100	0.8835	27.12	43.21	26.87	0.8875	29.57	45.51	30.02	90-100	31.10	908.5	91.7,91.7
110	1.354	23.57	36.91	23.22	1.329	23.85	36.21	25.37	100-110	25.22	933.7	94.3,94.3
120	1.862	20.25	30.94	17.76	1.812	18.45	28.59	21.21	110-120	19.75	953.4	96.3,96.3
130	2.388	17.38	25.69	13.78	2.320	13.12	24.34	17.50	120-130	14.76	968.2	97.8,97.8
140	2.921	14.77	20.89	10.85	2.843	9.888	19.71	14.23	130-140	10.27	978.5	98.8,98.8
150	3.428	11.69	16.46	7.999	3.360	7.218	14.99	10.56	140-150	6.490	984.9	99.5,99.5
160	3.880	5.124	11.69	5.741	3.837	4.864	9.836	4.442	150-160	3.545	988.5	99.8,99.8
170	4.243	4.281	4.215	4.106	4.235	4.213	4.275	4.300	160-170	1.389	989.9	100,100
180	4.438	4.435	4.447	4.391	4.438	4.447	4.451	4.397	170-180	0.4115	990.3	100,100
DEG	LUMINOUS INTENSITY:cd									UNIT:lm		

Conical surface Flux(90deg): 451.72 lm

%lum = 45.6%

%lamp = 45.6%

Conical surface Flux(120deg): 652.13 lm

%lum = 65.9%

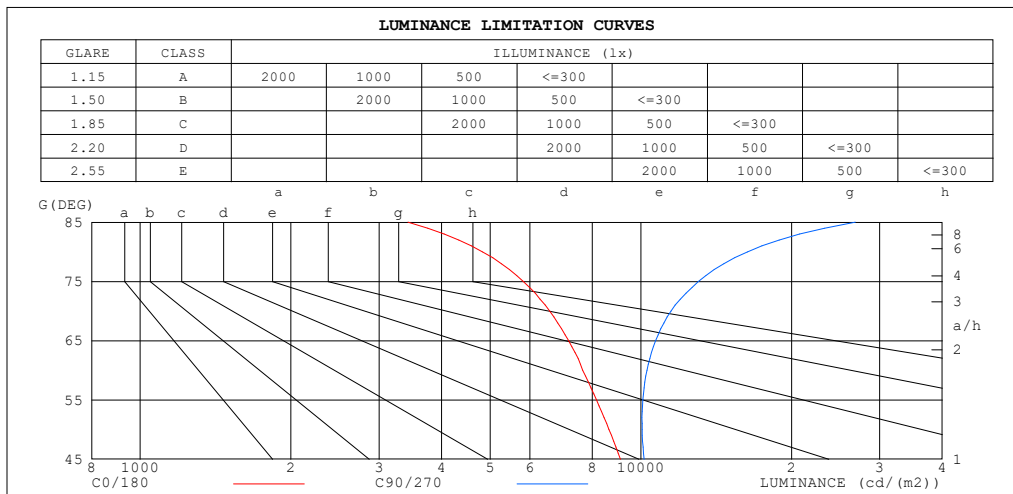
%lamp = 65.9%

C Range: 0 - 360DEG
C Interval: 22.5DEG
Test Speed: HIGH
Temperature:25.3DEG
Operators:JEFF
Test Date:24 September 2020

γ Range: 0 - 180DEG
 γ Interval: 1.0DEG
Test System:EVERFINE GO-2000A_V1 SYSTEM V2.0.366
Humidity:65.0%
Test Distance:7.250m [K=1.0000]
Remarks:

LUMINANCE LIMITATION CURVES

Test:U:240.03V I:0.1081A P:17.259W PF:0.6649 Freq:50.09Hz Lamp Flux:990.294x1 lm		
NAME: SUPER MINI GRAZER_1073_WHT_OPAL V_DPAL-007_3000	TYPE:LED	WEIGHT:
SPEC.:	DIM.:	SERIAL No.:
MFR.: DARKON	SUR.:	Shielding Angle:



LUMINANCE cd/(m2)		
G (DEG)	C0/180	C90/270
85	3429	26828
80	4832	16327
75	5825	13041
70	6574	11483
65	7173	10709
60	7657	10288
55	8156	10092
50	8637	10062
45	9111	10156

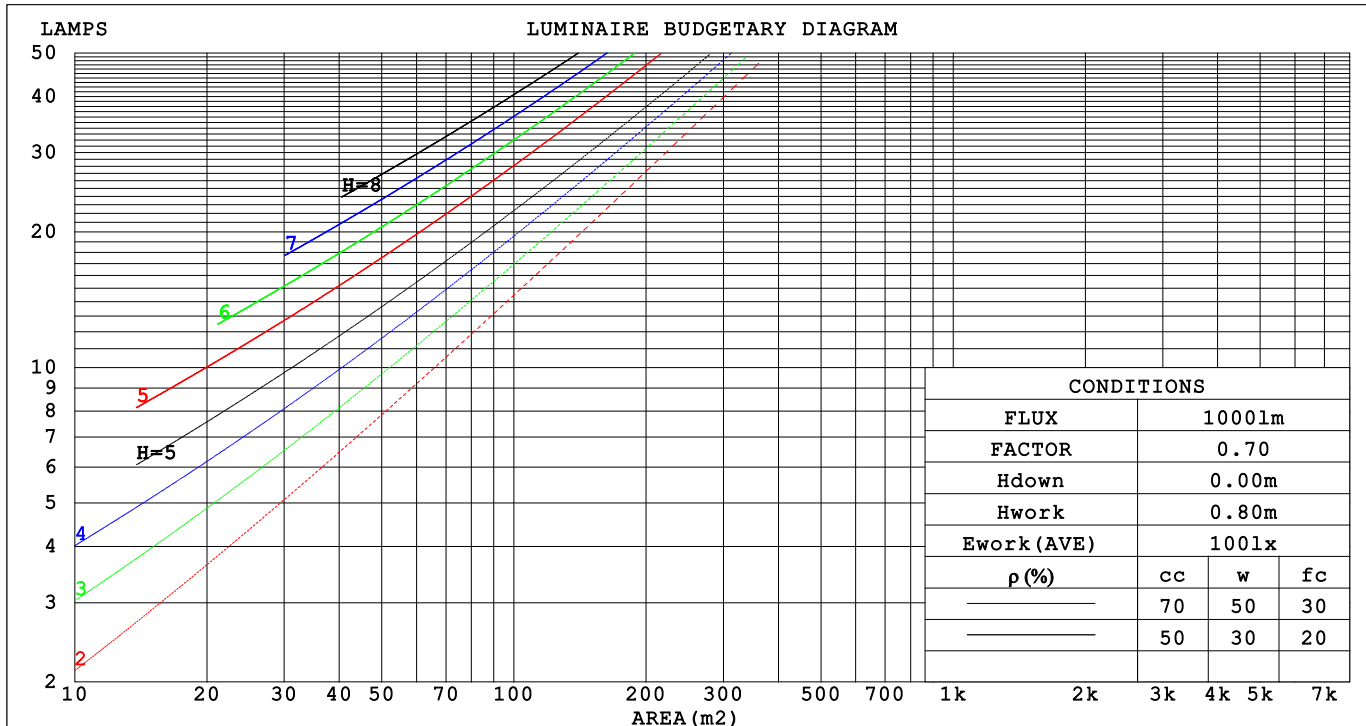
C Range: 0 - 360DEG
C Interval: 22.5DEG
Test Speed: HIGH
Temperature:25.3DEG
Operators:JEFF
Test Date:24 September 2020

γ Range: 0 - 180DEG
γ Interval: 1.0DEG
Test System:EVERFINE GO-2000A_V1 SYSTEM V2.0.366
Humidity:65.0%
Test Distance:7.250m [K=1.0000]
Remarks:

CU AND LUMINAIRE BUDGETARY ESTIMATE DIAGRAM

Test:U:240.03V I:0.1081A P:17.259W PF:0.6649 Freq:50.09Hz Lamp Flux:990.294x1 lm		
NAME: SUPER MINI GRAZER_1073_WHT_OPAL V_DPAL-007_3000	TYPE:LED	WEIGHT:
SPEC.:	DIM.:	SERIAL No.:
MFR.: DARKON	SUR.:	Shielding Angle:

pcc	80%			70%			50%			30%			10%			0
pw	50%	30%	10%	50%	30%	10%	50%	30%	10%	50%	30%	10%	50%	30%	10%	0
pfc	20%			20%			20%			20%			20%			0
RCR	RCR:Room Cavity Ratio						Coefficients of Utilization(CU)									
0.0	1.16	1.16	1.16	1.12	1.12	1.12	1.05	1.05	1.05	.98	.98	.98	.92	.92	.92	.89
1.0	.00	.95	.91	.96	.92	.88	.90	.86	.83	.84	.81	.79	.79	.76	.74	.71
2.0	.86	.79	.73	.84	.77	.72	.78	.73	.68	.73	.69	.65	.69	.65	.62	.59
3.0	.76	.67	.61	.73	.66	.59	.69	.62	.57	.64	.59	.54	.60	.56	.52	.49
4.0	.67	.58	.51	.65	.57	.50	.61	.54	.48	.57	.51	.47	.54	.49	.45	.42
5.0	.60	.51	.44	.58	.50	.43	.55	.47	.42	.52	.45	.40	.49	.43	.39	.37
6.0	.54	.45	.39	.52	.44	.38	.49	.42	.37	.47	.40	.36	.44	.39	.34	.32
7.0	.49	.40	.34	.48	.39	.34	.45	.38	.33	.43	.36	.32	.40	.35	.31	.28
8.0	.45	.36	.30	.43	.35	.30	.41	.34	.29	.39	.33	.28	.37	.32	.27	.25
9.0	.41	.33	.27	.40	.32	.27	.38	.31	.26	.36	.30	.25	.34	.29	.25	.23
10.0	.38	.30	.25	.37	.29	.24	.35	.28	.24	.33	.27	.23	.32	.26	.23	.21



C Range: 0 - 360DEG
C Interval: 22.5DEG
Test Speed: HIGH
Temperature:25.3DEG
Operators:JEFF
Test Date:24 September 2020

γ Range: 0 - 180DEG
γ Interval: 1.0DEG
Test System:EVERFINE GO-2000A_V1 SYSTEM V2.0.366
Humidity:65.0%
Test Distance:7.250m [K=1.0000]
Remarks:

WEC AND CCEC

Test:U:240.03V I:0.1081A P:17.259W PF:0.6649 Freq:50.09Hz Lamp Flux:990.294x1 lm		
NAME: SUPER MINI GRAZER_1073_WHT_OPAL V_DPAL-007_3000	TYPE:LED	WEIGHT:
SPEC.:	DIM.:	SERIAL No.:
MFR.: DARKON	SUR.:	Shielding Angle:

pcc	80%			70%			50%			30%			10%			0
pw	50%	30%	10%	50%	30%	10%	50%	30%	10%	50%	30%	10%	50%	30%	10%	0
pfc	20%			20%			20%			20%			20%			0
RCR	RCR:Room Cavity Ratio						Wall Exitance Coefficients(WEC)									
0.0																
1.0	.338	.192	.061	.327	.187	.059	.308	.176	.056	.289	.167	.054	.273	.158	.051	
2.0	.304	.166	.051	.294	.162	.050	.276	.154	.048	.260	.146	.046	.245	.138	.044	
3.0	.275	.147	.044	.267	.143	.043	.251	.136	.041	.236	.129	.040	.222	.123	.038	
4.0	.251	.130	.038	.243	.127	.038	.229	.121	.036	.216	.116	.035	.203	.110	.034	
5.0	.230	.117	.034	.224	.115	.033	.211	.110	.032	.198	.105	.031	.187	.100	.030	
6.0	.213	.107	.031	.206	.104	.030	.195	.100	.029	.184	.095	.028	.173	.091	.027	
7.0	.197	.098	.028	.192	.095	.027	.181	.091	.026	.171	.088	.025	.161	.084	.025	
8.0	.184	.090	.025	.179	.088	.025	.169	.084	.024	.160	.081	.023	.151	.078	.023	
9.0	.172	.083	.023	.167	.082	.023	.158	.078	.022	.150	.075	.021	.142	.072	.021	
10.0	.161	.077	.021	.157	.076	.021	.149	.073	.021	.141	.070	.020	.134	.067	.019	

pcc	80%			70%			50%			30%			10%			0
pw	50%	30%	10%	50%	30%	10%	50%	30%	10%	50%	30%	10%	50%	30%	10%	0
pfc	20%			20%			20%			20%			20%			0
RCR	RCR:Room Cavity Ratio						Ceiling Cavity Exitance Coefficients(CCEC)									
0.0	.277	.277	.277	.237	.237	.237	.162	.162	.162	.093	.093	.093	.030	.030	.030	
1.0	.270	.243	.220	.231	.209	.189	.158	.144	.131	.091	.083	.076	.029	.027	.025	
2.0	.262	.220	.185	.224	.189	.160	.154	.131	.111	.089	.076	.065	.028	.025	.021	
3.0	.254	.203	.162	.218	.175	.141	.150	.122	.099	.086	.071	.058	.028	.023	.019	
4.0	.246	.190	.147	.211	.164	.128	.145	.114	.090	.084	.067	.053	.027	.022	.018	
5.0	.239	.180	.137	.205	.156	.119	.141	.109	.084	.082	.064	.050	.026	.021	.016	
6.0	.232	.172	.129	.199	.149	.112	.137	.104	.079	.080	.061	.047	.026	.020	.016	
7.0	.225	.165	.123	.193	.143	.107	.134	.100	.076	.078	.059	.045	.025	.019	.015	
8.0	.218	.159	.119	.188	.138	.104	.130	.097	.074	.076	.057	.044	.024	.019	.015	
9.0	.212	.155	.116	.183	.134	.101	.127	.094	.072	.074	.056	.043	.024	.018	.014	
10.0	.206	.150	.113	.178	.131	.099	.123	.092	.070	.072	.054	.042	.023	.018	.014	

C Range: 0 - 360DEG
C Interval: 22.5DEG
Test Speed: HIGH
Temperature:25.3DEG
Operators:JEFF
Test Date:24 September 2020

γ Range: 0 - 180DEG
γ Interval: 1.0DEG
Test System:EVERFINE GO-2000A_V1 SYSTEM V2.0.366
Humidity:65.0%
Test Distance:7.250m [K=1.0000]
Remarks:

UGR(Unified Glare Rating) Table

Test:U:240.03V I:0.1081A P:17.259W PF:0.6649 Freq:50.09Hz Lamp Flux:990.294x1 lm										
NAME: SUPER MINI GRAZER_1073_WHT_OPAL V_DPAL-007_3000						TYPE:LED		WEIGHT:		
SPEC.:						DIM.:		SERIAL No.:		
MFR.: DARKON						SUR.:		Shielding Angle:		
ceiling/cavity	0.7	0.7	0.5	0.5	0.3	0.7	0.7	0.5	0.5	0.3
walls	0.5	0.3	0.5	0.3	0.3	0.5	0.3	0.5	0.3	0.3
working plane	0.2	0.2	0.2	0.2	0.2	0.2	0.2	0.2	0.2	0.2
Room dimensions						Viewed crosswise				
x = 2H y = 2H						Viewed endwise				
3H						20.2	21.6	20.6	22.0	22.4
4H						22.3	23.5	22.7	24.0	24.4
6H						23.4	24.6	23.8	25.0	25.5
8H						24.5	25.7	25.0	26.1	26.6
12H						25.1	26.2	25.6	26.7	27.2
2H						25.9	26.9	26.4	27.4	27.9
4H						20.7	21.9	21.2	22.4	22.9
6H						23.0	24.1	23.5	24.6	25.1
8H						24.3	25.3	24.8	25.8	26.3
12H						25.7	26.5	26.2	27.1	27.7
2H						26.4	27.2	27.0	27.8	28.4
4H						27.2	28.0	27.8	28.6	29.2
6H						24.6	25.4	25.1	25.9	26.6
8H						26.2	26.9	26.8	27.5	28.1
12H						27.1	27.7	27.8	28.3	29.0
2H						28.2	28.7	28.9	29.4	30.1
4H						22.9	23.7	23.5	24.3	24.9
6H						24.6	25.3	25.2	25.9	26.5
8H						26.3	26.9	26.9	27.5	28.2
12H						27.3	27.8	27.9	28.5	29.2
Variations with the observer position at spacings:										
S = 1.0H						+ 0.1 / - 0.2			+ 0.1 / - 0.1	
1.5H						+ 0.2 / - 0.3			+ 0.2 / - 0.3	
2.0H						+ 0.1 / - 0.3			+ 0.2 / - 0.3	

CIE Pub.117, 990.3 lm Total Lamp Luminous Flux Correct ($8\log(F/F_0) = -0.0$)

C Range: 0 - 360DEG
C Interval: 22.5DEG
Test Speed: HIGH
Temperature:25.3DEG
Operators:JEFF
Test Date:24 September 2020

γ Range: 0 - 180DEG
 γ Interval: 1.0DEG
Test System:EVERFINE GO-2000A_V1 SYSTEM V2.0.366
Humidity:65.0%
Test Distance:7.250m [K=1.0000]
Remarks:

UTILIZATION FACTORS TABLE

Test:U:240.03V I:0.1081A P:17.259W PF:0.6649 Freq:50.09Hz Lamp Flux:990.294x1 lm		
NAME: SUPER MINI GRAZER_1073_WHT_OPAL V_DPAL-007_3000	TYPE:LED	WEIGHT:
SPEC.:	DIM.:	SERIAL No.:
MFR.: DARKON	SUR.:	Shielding Angle:

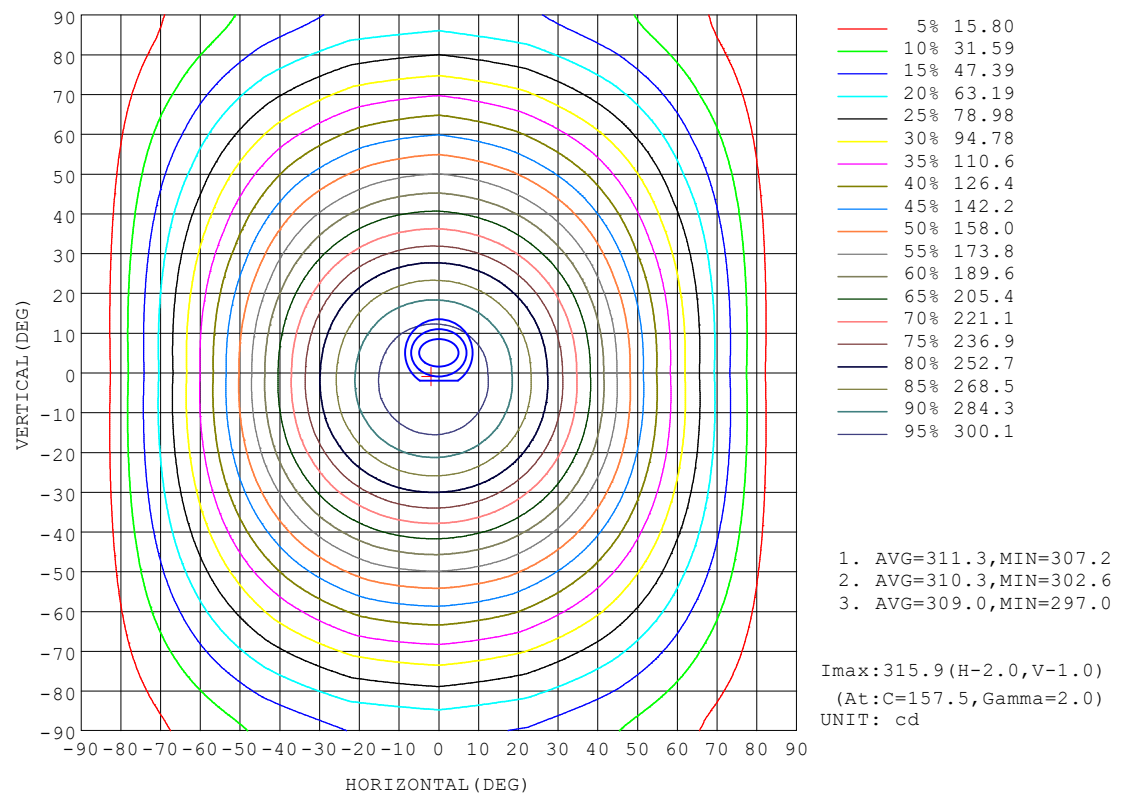
REFLECTANCE										
Ceiling	0.8	0.8	0.8	0.7	0.7	0.7	0.5	0.5	0.5	0
Walls	0.7	0.5	0.3	0.7	0.5	0.3	0.7	0.5	0.3	0
Working plane	0.2	0.2	0.2	0.2	0.2	0.2	0.2	0.2	0.2	0
ROOM INDEX	UTILIZATION FACTORS (PERCENT) $k(RI) \times RCR = 5$									
$k = 0.60$	54	42	35	53	41	35	51	41	34	28
0.80	63	51	44	62	50	43	59	49	42	35
1.00	71	59	51	69	58	51	66	59	50	42
1.25	78	66	59	76	65	58	72	63	57	48
1.50	83	72	64	80	71	63	76	68	62	52
2.00	90	80	73	87	78	71	82	75	69	59
2.50	94	85	78	91	83	76	85	79	74	63
3.00	97	89	83	94	87	81	88	83	78	66
4.00	101	95	89	98	92	87	92	87	83	71
5.00	104	98	93	101	95	91	94	90	86	74
ROOM INDEX	UF(total)									Direct
According to DIN EN 13032-2 2004			Suspended					SHRNOM = 1.25		

C Range: 0 - 360DEG
C Interval: 22.5DEG
Test Speed: HIGH
Temperature:25.3DEG
Operators:JEFF
Test Date:24 September 2020

γ Range: 0 - 180DEG
 γ Interval: 1.0DEG
Test System:EVERFINE GO-2000A_V1 SYSTEM V2.0.366
Humidity:65.0%
Test Distance:7.250m [K=1.0000]
Remarks:

ISOCANDELA DIAGRAM

Test:U:240.03V I:0.1081A P:17.259W PF:0.6649 Freq:50.09Hz Lamp Flux:990.294x1 lm		
NAME: SUPER MINI GRAZER_1073_WHT_OPAL V_DPAL-007_3000K	TYPE:LED	WEIGHT:
SPEC.:	DIM.:	SERIAL No.:
MFR.: DARKON	SUR.:	Shielding Angle:

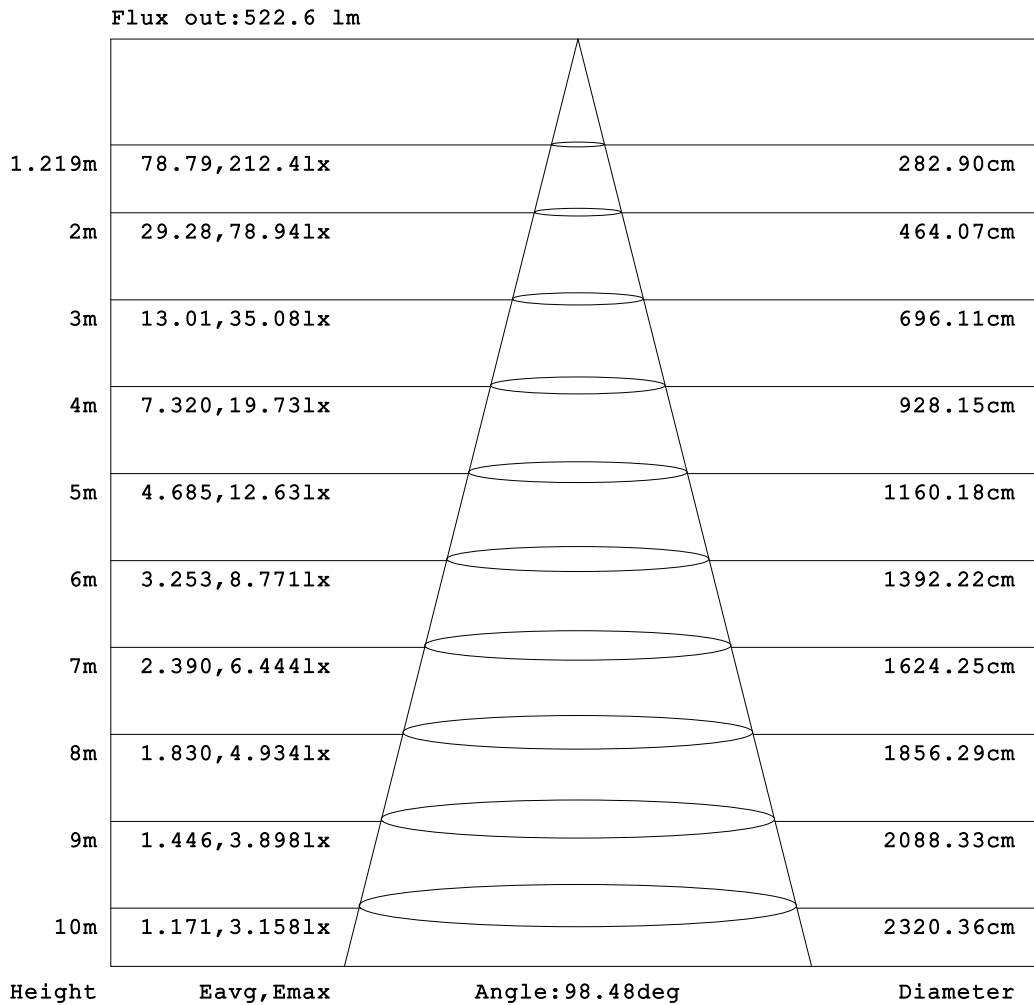


C Range: 0 - 360DEG
C Interval: 22.5DEG
Test Speed: HIGH
Temperature:25.3DEG
Operators:JEFF
Test Date:24 September 2020

γ Range: 0 - 180DEG
 γ Interval: 1.0DEG
Test System:EVERFINE GO-2000A_V1 SYSTEM V2.0.366
Humidity:65.0%
Test Distance:7.250m [K=1.0000]
Remarks:

AAI Figure

Test:U:240.03V I:0.1081A P:17.259W PF:0.6649 Freq:50.09Hz Lamp Flux:990.294x1 lm		
NAME: SUPER MINI GRAZER_1073_WHT_OPAL V_DPAL-007_3000	TYPE:LED	WEIGHT:
SPEC.:	DIM.:	SERIAL No.:
MFR.: DARKON	SUR.:	Shielding Angle:



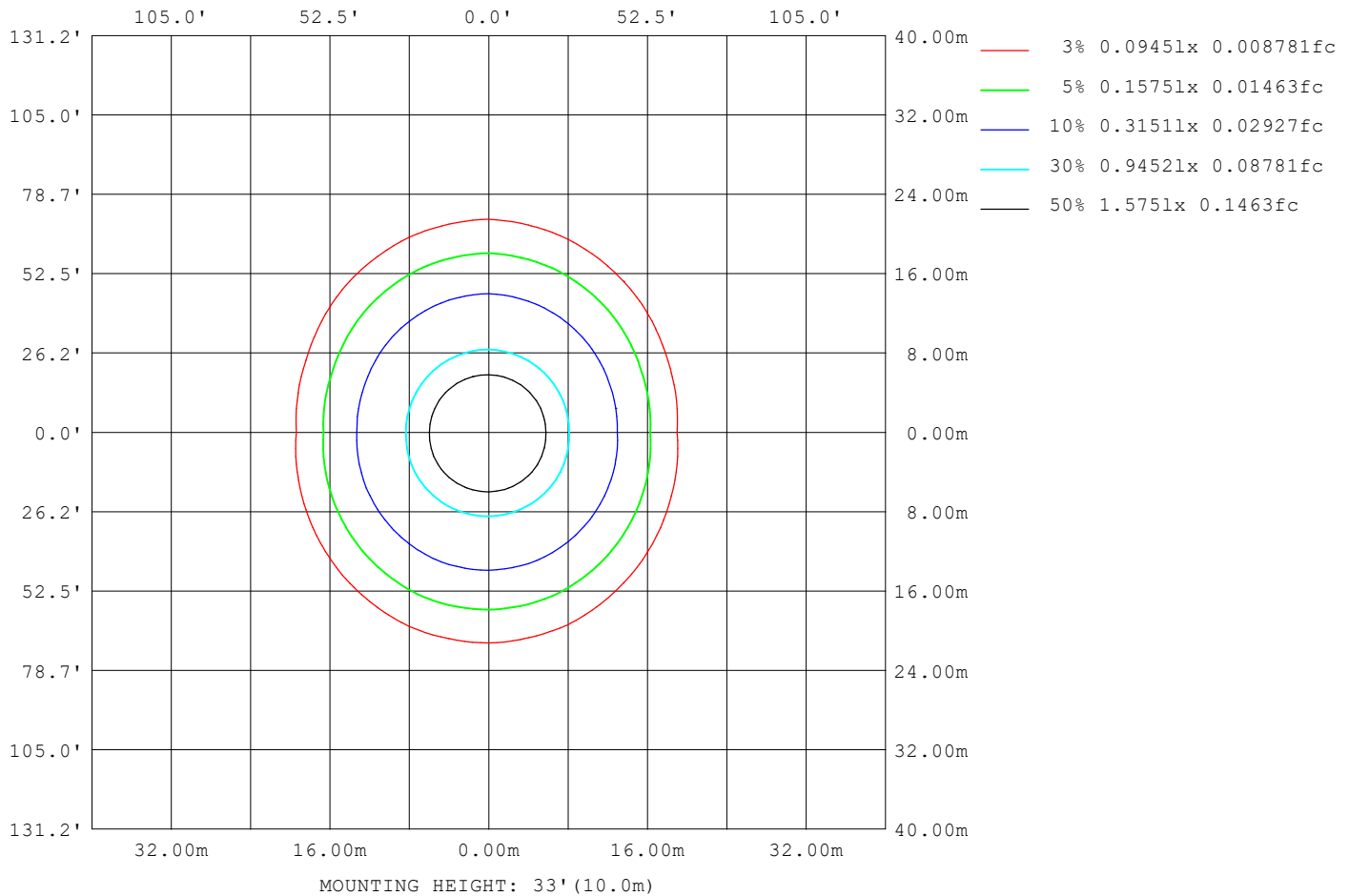
Note:The Curves indicate the illuminated area and the average illumination when the luminaire is at different distance.

C Range: 0 - 360DEG
C Interval: 22.5DEG
Test Speed: HIGH
Temperature:25.3DEG
Operators:JEFF
Test Date:24 September 2020

γ Range: 0 - 180DEG
γ Interval: 1.0DEG
Test System:EVERFINE GO-2000A_V1 SYSTEM V2.0.366
Humidity:65.0%
Test Distance:7.250m [K=1.0000]
Remarks:

ISOLUX DIAGRAM

Test:U:240.03V I:0.1081A P:17.259W PF:0.6649 Freq:50.09Hz Lamp Flux:990.294x1 lm		
NAME: SUPER MINI GRAZER_1073_WHT_OPAL V_DPAL-007_3000	TYPE:LED	WEIGHT:
SPEC.:	DIM.:	SERIAL No.:
MFR.: DARKON	SUR.:	Shielding Angle:



C Range: 0 - 360DEG
C Interval: 22.5DEG
Test Speed: HIGH
Temperature:25.3DEG
Operators:JEFF
Test Date:24 September 2020

γ Range: 0 - 180DEG
γ Interval: 1.0DEG
Test System:EVERFINE GO-2000A_V1 SYSTEM V2.0.366
Humidity:65.0%
Test Distance:7.250m [K=1.0000]
Remarks:

LED Avg.L Report

Test:U:240.03V I:0.1081A P:17.259W PF:0.6649 Freq:50.09Hz Lamp Flux:990.294x1 lm		
NAME: SUPER MINI GRAZER_1073_WHT_OPAL V_DPAL-007_3000	TYPE:LED	WEIGHT:
SPEC.:	DIM.:	SERIAL No.:
MFR.: DARKON	SUR.:	Shielding Angle:

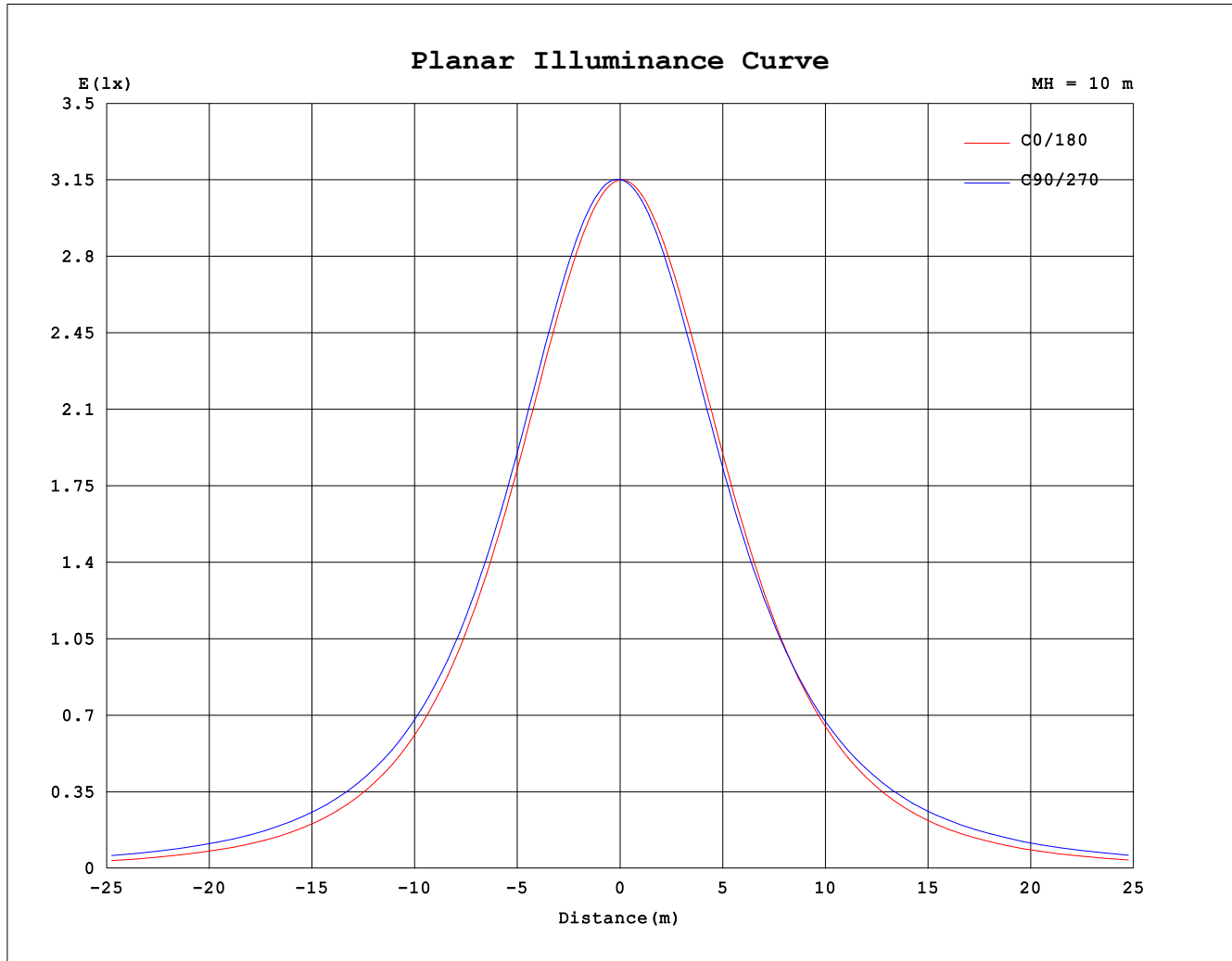
AvgL	cd/m2
L_0~180 (65) av	7446
L_0~180 (75) av	6070
L_0~180 (85) av	3621
L_90~270 (65) av	10896
L_90~270 (75) av	13284
L_90~270 (85) av	27437
L_45 (65) av	9511
L_45 (75) av	10524
L_45 (85) av	18703

Standard: GB/T 29293-2012

C Range: 0 - 360DEG
C Interval: 22.5DEG
Test Speed: HIGH
Temperature:25.3DEG
Operators:JEFF
Test Date:24 September 2020

γ Range: 0 - 180DEG
γ Interval: 1.0DEG
Test System:EVERFINE GO-2000A_V1 SYSTEM V2.0.366
Humidity:65.0%
Test Distance:7.250m [K=1.0000]
Remarks:

Planar Illuminance Curve



C Range: 0 - 360DEG
C Interval: 22.5DEG
Test Speed: HIGH
Temperature: 25.3DEG
Operators: JEFF
Test Date: 24 September 2020

γ Range: 0 - 180DEG
 γ Interval: 1.0DEG
Test System: EVERFINE GO-2000A_V1 SYSTEM V2.0.366
Humidity: 65.0%
Test Distance: 7.250m [K=1.0000]
Remarks:

LUMINOUS DISTRIBUTION INTENSITY DATA

Test:U:240.03V I:0.1081A P:17.259W PF:0.6649 Freq:50.09Hz Lamp Flux:990.294x1 lm																	
NAME: SUPER MINI GRAZER_1073_WHT_OPAL V_DPAL-007_3000										TYPE:LED			WEIGHT:				
SPEC.:										DIM.:			SERIAL No.:				
MFR.: DARKON										SUR.:			Shielding Angle:				

Table--1

UNIT: cd

C (DEG) γ (DEG)	0	22.5	45	67.5	90	112.5	135	157.5	180	202.5	225	247.5	270	292.5	315	337.5			
0	315	315	315	315	315	315	315	316	315	315	315	315	315	315	315	316			
5	312	313	313	314	315	315	315	315	314	314	313	312	312	312	312	312			
10	305	306	308	309	310	311	311	311	309	308	307	306	305	304	304	305			
15	294	296	298	300	301	302	302	302	300	299	297	295	293	293	293	294			
20	279	282	285	287	288	290	290	290	287	286	283	281	279	278	278	279			
25	262	265	268	270	272	273	275	274	271	269	267	264	262	261	261	262			
30	242	246	249	251	253	255	256	255	252	250	249	246	244	242	242	242			
35	220	225	228	231	233	235	236	234	231	230	229	227	225	223	221	220			
40	196	202	207	210	212	214	214	212	207	207	208	208	207	204	200	198			
45	173	180	185	190	192	193	192	189	184	185	188	190	190	186	181	176			
50	149	157	164	170	173	174	171	166	159	162	168	172	174	168	161	153			
55	125	134	143	152	155	155	150	143	135	139	148	155	157	151	142	131			
60	103	113	124	134	138	137	130	120	111	117	129	138	142	134	123	110			
65	81.2	92.1	105	117	121	120	110	98.6	87.4	96.4	111	121	126	118	105	90.4			
70	60.3	72.5	87.7	100	105	103	92.5	77.9	65.0	76.0	92.6	105	110	102	87.7	71.1			
75	40.4	54.0	70.7	84.4	90.5	87.1	74.9	58.4	43.8	56.6	75.3	89.3	93.8	86.4	71.0	52.9			
80	22.5	37.1	55.1	69.7	76.0	72.1	58.7	40.5	24.5	39.2	59.4	74.2	78.9	71.6	55.8	36.5			
85	8.01	23.0	41.5	56.4	62.7	58.5	44.5	25.4	8.91	24.7	45.8	60.8	65.5	58.6	42.9	23.1			
90	0.81	14.3	31.9	46.1	52.0	47.8	34.1	15.8	0.68	16.9	37.2	51.5	55.9	49.7	35.1	16.1			
95	0.68	13.0	28.9	41.4	46.7	42.2	30.0	14.2	0.70	15.4	33.6	46.0	50.0	45.5	32.4	14.8			
100	0.88	12.3	27.1	38.5	43.2	38.2	26.9	13.3	0.89	13.6	29.6	39.1	45.5	41.8	30.0	13.6			
105	1.12	11.6	25.3	35.8	40.0	35.2	24.3	12.4	1.10	12.7	26.7	36.1	40.5	38.3	27.6	12.6			
110	1.35	11.0	23.6	33.1	36.9	31.8	23.2	11.2	1.33	11.4	23.9	33.4	36.2	35.0	25.4	11.6			
115	1.60	10.6	21.9	30.4	33.9	28.4	20.5	9.98	1.56	9.16	21.5	30.8	31.8	31.9	23.2	10.8			
120	1.86	10.2	20.3	27.9	30.9	26.3	17.8	8.92	1.81	8.12	18.5	26.2	28.6	29.1	21.2	10.1			
125	2.12	9.73	18.8	25.5	28.2	22.9	15.8	8.10	2.07	7.36	16.0	24.7	27.2	26.4	19.3	9.37			
130	2.39	9.13	17.4	23.3	25.7	19.8	13.8	7.33	2.32	6.47	13.1	20.5	24.3	23.9	17.5	8.56			
135	2.65	8.52	16.1	21.3	23.2	17.8	12.3	6.53	2.58	5.61	10.9	17.4	22.0	21.4	15.9	7.53			
140	2.92	7.81	14.8	19.3	20.9	15.5	10.9	6.06	2.84	4.90	9.89	14.9	19.7	19.0	14.2	6.17			
145	3.18	4.84	13.4	17.3	18.7	13.1	9.54	5.58	3.10	4.40	8.65	12.4	16.6	16.7	12.6	4.39			
150	3.43	3.61	11.7	15.3	16.5	11.0	8.00	3.33	3.36	3.29	7.22	10.1	15.0	14.4	10.6	3.57			
155	3.66	3.80	10.1	12.9	14.1	8.85	7.37	3.58	3.60	3.56	6.24	7.66	12.5	11.9	7.66	3.75			
160	3.88	3.97	5.12	10.9	11.7	7.41	5.74	3.75	3.84	3.78	4.86	6.40	9.84	8.10	4.44	3.94			
165	4.07	4.15	4.20	4.71	5.86	5.02	4.01	3.97	4.05	4.00	4.06	4.24	5.00	4.21	4.20	4.11			
170	4.24	4.30	4.28	4.26	4.22	4.18	4.11	4.16	4.23	4.19	4.21	4.20	4.28	4.23	4.30	4.26			
175	4.37	4.41	4.38	4.37	4.33	4.31	4.27	4.32	4.39	4.35	4.37	4.33	4.40	4.34	4.39	4.35			
180	4.44	4.45	4.43	4.44	4.45	4.41	4.39	4.41	4.44	4.44	4.45	4.43	4.45	4.40	4.40	4.41			

C Range: 0 - 360DEG

C Interval: 22.5DEG

Test Speed: HIGH

Temperature:25.3DEG

Operators:JEFF

Test Date:24 September 2020

γ Range: 0 - 180DEG

γ Interval: 1.0DEG

Test System:EVERFINE GO-2000A_V1 SYSTEM V2.0.366

Humidity:65.0%

Test Distance:7.250m [K=1.0000]

Remarks: